

G-TECH[®]

Excellence in
Electrical & Electronic
Instruments Technology



Pioneer in Test & Measurement



| SI No. | Product | Model No. | Page No. |
|--------|--|---|----------|
| 1 | Digital Multimeter | MAS 830L / 92A TRMS / 19TB / DMM 95 AUTO TRMS GT91 / GT97 / GT98 / DMM 2000 / GT96 / GT99 / GT100 | 1-3 |
| 2 | Digital Capacitance Meter | CM 1500 | 4 |
| 3 | Digital LCR Meter | GT 4070 | 4 |
| 4 | Non Contact Voltage Tester | NCVD II | 4 |
| 5 | Digital Clamp Meter | DCM 2000 / M 266 / 6046TRMS / GT 30TRMS / 6055 / GT 2001 THZ TRMS 36 TRMS / 6056+TRMS / GT35 | 4-6 |
| 6 | Digital Thermometers | GT 301 / GT 304 BT / GT 305 / 305-II | 7 |
| 7 | Digital Anemometers | AVM-02 / AVM-03 / AVM-04 CFM + USB + BT AVM-01 / AVM-08 WITH USB / AVM-05 8IN1 | 8-10 |
| 8 | Digital Light Meters | LX-101A / LX 102 WITH USB / LX 103 | 11 |
| 9 | Digital Temp. & Humidity Meters | HT-301 / HT-305 | 12 |
| 10 | Digital Sound Level Meters | SL 101 / SL 102 / SL 103 / SL 104 With USB | 13 |
| 11 | Digital Tachometers | 2234C / 2235B / 2236C | 14 |
| 12 | EMF Meter | EMR 822A | 15 |
| 13 | Infrared Thermometers | MT2 / MT4 / MT5 / MT8 / MT13 / MT16 GTX16 / GTX18 / GTX22 | 15-17 |
| 14 | Thermal Imager | TIC 24 / TIC 25 | 18 |
| 15 | Digital Insulation Tester | GT9510 / GT9525 / GT9550 / 3125A GT3126 / 3127 / 3128 / 3129 | 19-20 |
| 16 | Digital Earth Resistance Tester | 1520 / GT1521 / GT1523 / GT1525 | 21-23 |
| 17 | Digital Clamp on Earth Tester | GT6100 / GT6200 / GT6300 | 24 |
| 18 | Digital Power Quality Analyzer | GT3100 + USB | 25-26 |
| 19 | Digital ELCB / Leakage tester | 1812EL / 1813EL / GT1526 | 27-28 |
| 20 | Digital Coating Thickness Meter | CM 8829 / GM 998 | 28 |
| 21 | Digital Moisture Meter | 291 / MD4G / PMM 10 / GT 292 | 29-30 |
| 22 | Digital Force Gauge | G-TECH 5Kg/20Kg | 31 |
| 23 | Ultrasonic Thickness Meter | UTM9 | 31 |
| 24 | Phase Sequence Meter | GT 5801 | 31 |
| 25 | Digital Vibration Meter | VB 63 / VB 63B | 32 |
| 26 | Optical Power Meter & Wire Tracker | GT 65 / GT 66 | 33 |
| 27 | Air Quality Meter | AQ-1063 / AQ-1064 | 34-35 |
| 28 | Digital Manometer | PM-520 WITH USB | 36 |
| 29 | Digital Battery Testers | BT31 / BT31P / BT30 / GT32 | 37-38 |
| 30 | Gas Detector / Monitor / Multi Gas Detector / Sampling Pump | GT1000 / GT2000 / GT3000 / GT4000 / GT5000 / GT6000 / GT7000 GT8000 / Sampling Pump | 39-44 |
| 31 | Multifunction Calibrators & Process Meters | G-TECH 01 ⁺ / G-TECH 03 ⁺ / G-TECH 04 ⁺ / G-TECH 05 ⁺ / G-TECH 11 ⁺ G-TECH 14 ⁺ / G-TECH 15 ⁺ GT24/25 / GT26 / GT26H / 709H / PM 79 / PM 79A | 45-59 |
| 32 | Potable Metal Hardness Tester | GT 270 / GT 270P | 60 |
| 33 | Alcohol Tester | AT 6000 / AT 6001 | 60 |

**DIGITAL MULTIMETER
G-TECH MAS 830L**

Full Range Protection



| Specification | Range | Accuracy |
|---------------|--------------|--------------|
| Display | 3 1/2 Digit | - |
| DCV Voltage | 200 mV-600V | ± 0.8% |
| ACV Voltage | 200V-600V | ± 2% |
| DCA Current | 200µA-10A | ± 1.8% - ±2% |
| Resistance | 200Ω-2M ohms | ± 1.0% |

Diode Test, Continuity Buzzer, Transistor Test
Backlight Display, 9V Battery
Multimeter test leads, Operation Manual

**DIGITAL MULTIMETER
G-TECH GT 92A TRMS**

Full Range Protection



| Specification | Range | Accuracy |
|---------------|-------------------------------|----------|
| Display | 3 1/2 Digit | - |
| DC Voltage | 200 mV-2-20-200-1000V | ± 0.5% |
| AC Voltage | 20-200-750V | ± 0.8% |
| DC Current | 20mA, 200mA, 10A | ± 1.2% |
| AC Current | 20mA, 200mA, 10A | ± 1.8% |
| Resistance | 200Ω-2k-20k-200k-2M-20M-200MΩ | ± 3% |
| Capacitance | 20nF-200nF-2uF-200uF | ± 1.5% |
| Frequency | 2kHz-200kHz | ± 1.5% |

IR Detectors, Diode Test, Audible Continuity, HFE,
9V Battery, Auto Power off after 15 Min.,

**DIGITAL MULTIMETER WITH TERMINAL BLOCKING
G-TECH 19TB**



| Specification | Range | Accuracy |
|---------------|------------------------------|----------|
| Display | 3 1/2 Digit (1999 counts) | - |
| DCV Voltage | 200mV-2-20-200-1000V | ± 0.5% |
| ACV Voltage | 200mV-2-20-200-750V | ± 1% |
| DC Current | 2mA-20mA-200mA-10A | ± 1.8% |
| AC Current | 2mA-20mA-200mA-10A | ± 2.0% |
| Resistance | 200-2k-20k-200k-2M-20M-200MΩ | ± 1.0% |
| Capacitance | 20n-200n-2uF-20uF-200uF | ± 4.0% |
| Temperature | -20°C-1000°C | ± 1.0% |
| Frequency | 2k-20kHz | ± 3.0% |

Diode/Continuity Buzzer / APO / Backlight &
Test Leads, Temperature Probe,
Operation Manual, Battery

**DIGITAL MULTIMETER
G-TECH DMM 95 AUTO TRMS**



| Specification | Measuring Range | Accuracy |
|---------------|-------------------------|----------|
| LCD Display | 3¾ Digit (6000 counts) | - |
| DC Voltage | 600mV~1000V | ± 1% |
| AC Voltage | 600mV~750V | ± 1% |
| DC Current | 600uA~10A | ± 1.5% |
| AC Current | 600uA~10A | ± 1.5% |
| Resistance | 600-6k-60k-600k-6M-60MΩ | ± 1.5% |
| Capacitance | 10nF~6000µF | ± 2% |
| Temperature | -20°C -1000°C | ± 1% |
| Frequency | 10Hz-10MHz | |

Diode/Continuity Buzzer / APO / Backlight &
Test Leads, Temperature Probe,
Operation Manual, Battery

**DIGITAL AUTO RANGE MULTIMETER
G-TECH GT 91**



| Specification | Range | Accuracy |
|---------------|--|----------|
| Display | 6000 counts | |
| Ranging | Auto | |
| DC Voltage | 60mV-600mV-6V-60V-600V-1000V | ± 0.5% |
| AC Voltage | 60mV-600mV-6V-60V-600V-750V | ± 1.0% |
| DC Current | 60mA-600mA-6A-10A | ± 1.2% |
| AC Current | 60mA-600mA-6A-10A | ± 1.5% |
| Resistance | 600Ω-6KΩ-60KΩ-600KΩ-6MΩ-60MΩ | ± 0.5% |
| Capacitance | 9.999nF-99.99nF-999.9nF-9.999μF-99.99μF 999.9μF-9.999mF | ± 2.0% |
| Frequency | 99.9Hz-999.9Hz-9.999KHz-999.9KHz-9.999MHz | ± 0.1% |
| Duty Cycle | 1% to 99% | ± 0.1% |
| Continuity | YES | |
| Diode | YES | |

**DIGITAL AUTO RANGE MULTIMETER
G-TECH GT 97 TRMS**



| Specification | Range | Accuracy |
|---------------|--|----------|
| Display | 6000 counts | |
| Ranging | Auto | |
| DC Voltage | 60mV-600mV-6V-60V-600V-1000V | ± 0.5% |
| AC Voltage | 60mV-600mV-6V-60V-600V-750V | ± 1.0% |
| DC Current | 60mA-600mA-6A-10A | ± 1.2% |
| AC Current | 60mA-600mA-6A-10A | ± 1.5% |
| Resistance | 600Ω-6KΩ-60KΩ-600KΩ-6MΩ-60MΩ | ± 0.5% |
| Capacitance | 9.999nF-99.99nF-999.9nF-9.999μF-99.99μF 999.9μF-9.999mF | ± 2.0% |
| Frequency | 99.9Hz-999.9Hz-9.999KHz-999.9KHz-9.999MHz | ± 0.1% |
| Duty Cycle | 1% to 99% | ± 0.1% |
| Continuity | YES | |
| Diode | YES | |
| Temperature | (20°C~1000°C) - (-4°C~1832°F) | ± 2.5% |

Data hold, Backlight, Low battery indication, Auto power-off

**DIGITAL SMART MULTIMETER
G-TECH GT 98 TRMS**



| Specification | Range | Accuracy |
|---------------|-----------------------------------|----------|
| LCD Display | 3¾ Digit (6000 counts) | - |
| DC Voltage | 600mV-6V-60V-600V | 1.0% |
| AC Voltage | 600mV-6V-60V-600V | 1.2% |
| DC Current | 600mA-6A-10A | 1.5% |
| AC Current | 600mA-6A-10A | 1.8% |
| Resistance | 600Ω-6KΩ-60KΩ-600KΩ-6MΩ-60MΩ | 1.0% |
| Capacitance | 6nF-60nF-600nF-6μF-600μF-6mF-60mF | 3.0% |
| Temperature | -20°C~300°C | 1.0% |
| Frequency | 600Hz-600kHz-6MHz-10MHz | 1.5% |

Diode Test, Audible Continuity
9V Battery, Soft Carrying Case, Test Leads

**DIGITAL MULTIMETER
G-TECH DMM 2000**

2000V AC/DC



FOR SOLAR
PUPOSE

| Specification | Range | Accuracy |
|---------------|----------------------------------|----------|
| Display | 3 ½ digit | - |
| DC Voltage | 200 mV-2-20-200-1000V-2000V | ± 0.8% |
| AC Voltage | 2-20-200-700-2000V | ± 1.5% |
| DC Current | 200uA-2mA-20mA-200mA | ± 1.2% |
| AC Current | 20mA-200mA | ± 1.5% |
| Resistance | 200-2k-20k-200k-2M- 20M-200MΩ | ± 1.5% |
| Capacitance | 20nF-200nF-2uF-200uF- 2000uF | ± 3% |

Data hold, Backlight, Diode Test, Audible Continuity
Leads, Carrying case

**DIGITAL MULTIMETER
G-TECH GT 96**



**DIGITAL MULTIMETER
AUTO RANGING + USB
G-TECH GT 99**



**DIGITAL MULTIMETER
AUTO RANGING + USB
G-TECH GT 100**



Functions

| | | | |
|-------------------------|--|--|--|
| DCV | 200mv/2V/20V/200V 1000V | 600mv/6V/60V/600V 1000V | 220mv/2.2V/22V/220V 1000V |
| ACV | 200mv/2V/20V/200V 750V | 6V/60V/600V 750V | 220mv/2.2V/22V/220V 750V |
| DCA | 200uA/2000uA/20mA/200mA 20A | 600uA/6000uA/60mA/600mA 6A/10A | 220uA/2200uA/22mA/220mA 10A |
| ACA | 20mA/200mA 20A | 600uA/6000uA/60mA/600mA 6A/10A | 220uA/2200uA/22mA/220mA 10A |
| Resistance | 200Ω/2kΩ/20kΩ/200kΩ 2MΩ 20MΩ/200MΩ | 600Ω 6kΩ/60kΩ/600kΩ/6MΩ 60MΩ | 220Ω/2.2kΩ 22kΩ/220kΩ/2.2MΩ 22MΩ/220MΩ |
| Capacitance | 20nF 200nF/2uF/20uF/200uF/2mF | 60nF 600nF/6uF/60uF 600uF/6mF/60mF | 22nF/220nF/2.2uF 22uF/220uF/2.2mF 22mF/220mF |
| Frequency | 200Hz ~ 2MHz | 10Hz/100Hz/1kHz/10kHz 100kHz/1MHz/30MHz | 22Hz/220Hz/22kHz/220kHz 2.2MHz/22MHz/50MHz |
| Temperature | | -20°C~400°C 400°C~1000°C | -20°C~400°C 400°C~1000°C |
| Conductance | 0.1~100ns | ✓ | - |
| General Specification : | | | |
| Max Display | 1999 (4½ Digits) | 5999 (3 5/6 Digits) | 22000 (4½ Digits) |
| Simulated Bar | - | ✓ (Paragraph 61) | ✓ (Paragraph 46) |
| Transistor test | ✓ | ✓ | - |
| Live | - | ✓ | - |
| NCV | - | ✓ | - |
| USB | - | ✓ | ✓ |
| Max/min | - | ✓ | ✓ |
| Diode | ✓ | ✓ | ✓ |
| On/off buzzing | ✓ | ✓ | ✓ |
| Relative value | ✓ | ✓ | ✓ |
| Data retention | ✓ | ✓ | ✓ |
| Backlight | ✓ | ✓ | ✓ |
| Low voltage | ✓ | ✓ | ✓ |
| Over range | Display "OL" | Display "OL" | Display "OL" |
| Auto shutdown | About 15 minutes | Shutdown About 15 minutes of inactivity | Shutdown About 15 minutes of inactivity |
| Sampling rate | 2.8 times / second | 3 times / second | 2 times / second |
| Work environment | (0-40)°C < 75%RH | (0-40)°C, Relative humidity < 80%RH | (0-40)°C, Relative humidity < 80%RH |
| Storage environment | (-20~60)°C < 85%RH | (-10~50)°C < 80%RH | (-10~50)°C < 80%RH |
| Size | 189 x 88 x 56 mm | 189 x 88 x 56 mm | 189 x 88 x 56 mm |
| Weight | 400g | 423g | 423g |

**DIGITAL CAPACITANCE METER
G-TECH CM 1500**



Specification

Display : 3½ Digital Large (1.999 Count)
Auto Power Off (APO)

Capacitance

| Range | Resolution | Accuracy | Test Frequency |
|-------|------------|-------------------------|----------------|
| 200pF | 0.1pF | ± 0.5% of rdg +1 digits | 800Hz |
| 2nF | 1pF | | |
| 20nF | 10pF | | |
| 200nF | 100pF | | |
| 2µF | 1000pF | | |
| 20µF | 0.01µF | ± 2.0% of rdg +2 digits | 8Hz |
| 2mF | 0.1µF | | |
| 20mF | 10µF | | |

**DIGITAL LCR METER
G-TECH GT 4070**



Specification

Display : 3½ Digital Large (1.999 Count)
Auto Power Off (APO)
& Data hold

CAPACITANCE

| Range | Resolution | Accuracy |
|--------|------------|--------------------------|
| 200pF | 0.1pF | ± 2.5% of rdg + 5 digits |
| 2nF | 1pF | |
| 20nF | 10pF | |
| 200nF | 100pF | |
| 2µF | 0.01µF | |
| 20µF | 0.1µF | ± 5.0% of rdg + 5 digits |
| 200µF | 0.1µF | |
| 2000µF | 10µF | |

INDUCTANCE

| Range | Resolution | Accuracy |
|-------|------------|--------------------------|
| 200µH | 0.1µH | ± 3.0% of rdg + 6 digits |
| 2mH | 1µH | ± 2.0% of rdg + 5 digits |
| 20mH | 10µH | |
| 200mH | 100µH | |
| 2H | 1mH | ± 5.0% of rdg + 5 digits |
| 20H | 10mH | |

RESISTANCE

| Range | Resolution | Accuracy |
|-------|------------|--------------------------|
| 20Ω | 0.01Ω | ± 1.0% of rdg + 5 digits |
| 200Ω | 0.1Ω | ± 0.8% of rdg + 2 digits |
| 2KΩ | 1Ω | |
| 20KΩ | 10Ω | |
| 200KΩ | 100Ω | |
| 20MΩ | 10KΩ | ± 2.0% of rdg + 5 digits |

**DIGITAL CLAMPMETER
G-TECH DCM 2000**

**2000V AC/DC
2000A AC/DC**



**FOR SOLAR
PUPOSE**

| Specification | Range | Accuracy |
|---------------|-------------------------|----------|
| Display | 3 ½ digit (1999 counts) | |
| DC Voltage | 2V-20V-200V-2000V | ± 0.5% |
| AC Voltage | 2V-20V-200V-2000V | ± 1% |
| DC Ampere | 20A-200A-2000A | ± 1.9% |
| AC Ampere | 20A-200A-2000A | ± 1.9% |
| Capacitance | 20nF-2000µF | ± 3% |
| Resistance | 20Ω-20MΩ | ± 1% |

Backlight, Jaw Size - 55MM, Auto range inrush current
Diode Test, Carrying case, Leads, Torch

**NON CONTACT VOLTAGE DETECTOR
G-TECH NCVD-II**



Specification **Mesuring Range**

| | |
|----------------|---|
| Functions | Safe non contact voltage detection, torch light |
| Voltage range | 90V~1000V AC |
| Alarm mode | Bright red LED with audible sound |
| Torch | White LED illumination |
| NCV sesitivity | Fixed |
| Power | 1.5V AAA x 02 batteries |

**DIGITAL CLAMP METER
G-TECH M 266**

Full Range Protection



| Specification | Range | Accuracy |
|---------------|---------------------------|----------|
| Display | 3 1/2 Digit (2000 counts) | - |
| DCV Voltage | 1000V | ± 1% |
| ACV Voltage | 750V | ± 1.2% |
| AC Current | 1000A | ±2.5% |
| Resistance | 200Ω ~ 20KΩ | ± 1.0% |

Audible Continuity Test
Test Leads, Soft Carrying Case, Manual, Battery

**DIGITAL CLAMP METER
G-TECH GT6046TRMS**

Full Range Protection



| Specification | Range | Accuracy |
|---------------|------------|----------|
| DC Voltage | 1000V | ±1% |
| AC Voltage | 750V | ±1.2% |
| AC Ampere | 200-1000A | ±2.5% |
| Resistance | 200Ω ~ 2MΩ | ±1% |
| Frequency | 20KHz | ±3% |

Diode Test, Continuity Test, Data hold function, back light
Manual, Test Leads, Soft Carrying Case, 9V Battery.

**DIGITAL CLAMP METER
G-TECH GT30TRMS**

Full Range Protection



| Specification | Range |
|------------------------|--|
| Display | 3½ digit |
| Polarity indication | " " Displayed automatically |
| Over-range indication | "OL" Displayed |
| Low battery indication | ± Displayed |
| AC Voltage | 20V~600V |
| DC Voltage | 20V~600V |
| Resistance | 20MΩ |
| AC Current | 2A Range 0.001A resolution (± 2.5% Accuracy) 200A Range 0.1A resolution (± 2.5% Accuracy) 600A Range 1A resolution (± 3.5% Accuracy) |
| Capacitance | 200µF range 1µF resolution (± 5% Accuracy) |

Non contact AC voltage detection (NCV)
Diode test, Continuity test,
Soft carrying case, Test Leads

**DIGITAL CLAMP METER TRUE RMS
MODEL G-TECH 6055**



| Specification | Range |
|---------------|--|
| Display | 3 3/4 Digital LCD Screen 4000 Count |
| DC Voltage | 400mV-4V-40V/400V/600V |
| AC Voltage | 4V/40V/400V/600V |
| AC Current | 40A-400A |
| Resistance | 400-4k-40k-400k-4M-40MΩ |
| Frequency | 10Hz-400KHz-4MHz |
| Capacitance | 1nF-4uF-400uF-4mF |
| Temperature | 0°C~750°C (32°F~11832°F) |

True RMS. Non contact voltage test, Back light
Diode Test, 9V Battery, Continuity test
Soft Carrying Case, Test Leads

**DIGITAL CLAMP METER
G-TECH GT2001 THZ TRMS**

Full Range Protection



| Specification | Range | Accuracy |
|---------------|----------------|----------|
| Display | 6000 counts | |
| AC Voltage | 750V | ± 1% |
| DC Voltage | 1000V | ± 1% |
| Resistance | 60MΩ | ± 1% |
| AC Current | 1000A | ± 1% |
| Temperature | -40°C ~ +750°C | ± 1% |
| Frequency | 60MHz | ± 1% |
| Capacitance | 60mF | ± 5% |

Non contact AC voltage detection (NCV)
Diode test, Continuity test,
Hard carrying case, Test Leads

**DIGITAL CLAMP METER (600A AC/DC)
G-TECH 36 TRMS**



| Specification | Range | Accuracy |
|---------------|----------------------------|----------|
| Display | 4000 counts | |
| DC Voltage | 400mV-4V-400V-600V | ± 1% |
| AC Voltage | 400mV-4V-400V-600V | ± 1% |
| DC Ampere | 40-600A | ± 2% |
| AC Ampere | 40-600A | ± 2% |
| Resistance | 400Ω-40MΩ | ± 1.2% |
| Frequency | 0-10MHz | ± 1% |
| Capacitance | 40nF-400nF-4uF-40uF-100-uF | ± 5% |

Diode Test, Audible Continuity,
9V Battery, Soft Carrying Case, Test Leads

**DIGITAL CLAMP METER 1000A AC/DC
G-TECH 6056 + TRMS**



| Specification | Range | Accuracy |
|---------------|-----------------------------------|----------|
| Display | 3 ¾ Digit (6000 Counts) | |
| DC Voltage | 600mV-6-60-600-1000V | |
| AC Voltage | 6-40-400-750V | ± 0.5% |
| AC Ampere | Auto Range, 60A-600A-1000A | ± 4% |
| DC Ampere | Auto Range, 60A-600A-1000A | ± 4% |
| Resistance | 600-6k-600k-6MΩ-60MΩ | ± 1% |
| Capacitance | 1nF-10nF-100nF-1uF-10uF-100uF-1mF | ± 5% |
| Frequency | 0-10 mHz | ± 0.3% |
| Temperature | -20°C + 1000°C | ± 2% |
| Duty Cycle | 10% - 90% | |

TRMS, NCV, Voltage, Backlight
Diode Test, Continuity Test, Data Hold, 1.5Vx2 AAA

**DIGITAL SMART CLAMP METER
G-TECH GT 35**



| SPECIFICATION | Mesuring Range | Accuracy |
|---------------|--|----------|
| LCD Display | 3¾ Digit (6000 Counts) | |
| DC Voltage | 6V - 60V - 600V | 1.0% |
| AC Voltage | 6V - 60V - 600V | 1.3% |
| AC Current | 60A - 600A | 2.5% |
| Resistance | 600Ω-6kΩ-60kΩ-600kΩ-6MΩ-60MΩ | 1.0% |
| Capacitance | 6nF-60nF-600nF-6μF-60μF-600μF-6mF-40mF | 3.0% |
| Temperature | 400°C (752°F) | 1.0% |
| Frequency | 600Hz-6KHz-60KHz-600KHz-6MHz-10MHz | 1.5% |

True RMS test, Non contact voltage test, Backlight,
Data hold, Continuity buzzer test, Auto Power off,
Lower Power Indication, Overload protection, Battery

**PEN TYPE FOOD THERMOMETER
G-TECH GT 301**



Features :

- Temperature Locking temperature / Data hold
- Max./ Min. Measuring Function
- Conversion function of °C / °F temperature unit
- Lower Power Prompt • LCD Display
- Automatic Power Off
- Novel Hand & Portable appearance design

SPECIFICATION

| | |
|-----------------------------|-----------------------|
| Temperature Measuring Scope | -50~300°C (-58~572°F) |
| Resolution | 0.1°C |
| | -10 ~ 100°C ±1°C |
| Accuracy | 100 ~ 200°C ± 1.5°C |
| | ± 2°C Others |
| Power Source | CR2032 x 1 |
| The Environment temperature | 0 ~ 40°C (32 ~ 104°F) |
| Environmental humidity | 10-90% RH |

| | |
|-------------------------|---------------|
| Length of Whole Machine | 242.5 x 33 mm |
| Net Length of Probe Rod | 149.5 x 4 mm |
| Display Dimension | 44 x 18 mm |

**BBQ THERMOMETER 04 CHANNEL
G-TECH GT 304 BT**



Features :

- Communication through Bluetooth (with app on mobile phone easy to perform operations on digital grill meat thermometerRecording Function, (7000 Data can be recorded)
- Light alarm • Unit switch • LCD backlight • Low power indication
- Manual shutdown

SPECIFICATION

| | |
|-----------------------------|-----------------------|
| Temperature Measuring Scope | -40~300°C (-40~572°F) |
| Accuracy | ± 2°C |
| Response Time | 2s |

Four Channel : Equipped with 2 Food stainless steel probes

| | |
|--------------|-------------------------|
| Power Supply | 2 x 1.5V AAA battery |
| Dimension | 80 x 80 x 25.5 mm |
| Weight | 108g (Battery included) |

**DIGITAL K-TYPE THERMOMETER
G-TECH GT 305**



Specification

Range

| | |
|-----------------|---|
| Display | 0.5", 3 1/2 Digit LCD with max reading of 999.9 |
| Transducer Type | K type thermocouple (NiCr-NiAL) |
| Range | -200°C - 1370°C (Extend to 1300°C) |
| Resolution | 1°C (1d) |

9V Battery, Temp. Probe & Manual

**DIGITAL dual input K-TYPE THERMOMETER
G-TECH GT 305-II**



Main unit - Measuring range

- J-type : -210° C to 1200° C (-346° F to 2192° F)
- K-type : -200° C to 1372° C (-328° F to 2501° F)
- T-type : 250° C to 400° C (-418° F to 752° F)
- E-type : 150° C to 1000° C (-238° F to 1832° F)
- N-type : 200° C to 1300° C (-328° F to 2372° F)
- Accuracy : ± 0.1% +0.6° C
- R-type &
- S-type : 0° C to 1767° C (-32° F to 3212° F)
- Input : Double channel input with K type thermometer

Features:

- * Unit Celsius and Fahrenheit unit.
- * Data hold and Max, Min, AVG.

- * Double display with back light shows T1/T2 and combination of T1/T2.

DIGITAL ANEMOMETER G-TECH AVM-02



| Air Velocity | | | | |
|-----------------------|--------------------------|--------------------|-----------|---------------|
| Unit | Range | Minimum Resolution | Threshold | Accuracy |
| M/s | 0~45 | 0.01 | 0.3 | ± 3%±0.1 dgts |
| Ft/min | 0~8800 | 1.9 | 60 | ± 3%+10 dgts |
| Knots | 0~88 | 0.02 | 0.6 | ± 3%±0.1 dgts |
| Km/hr | 0~140 | 0.03 | 1 | ± 3%±0.1 dgts |
| Mph | 0~100 | 0.02 | 0.7 | ± 3%±0.1 dgts |
| Temperature | | | | |
| Unit | Range | Resolution | Accuracy | |
| °C | 0°C~+45°C | 0.2 | ±2°C | |
| °F | 32°F~113°F | 0.36 | ±3.6°F | |
| Power Supply | 9V Battery | | | |
| Operating Temperature | -10°C~+50°C (14°F~122°F) | | | |
| Operating humidity | 40%RH~85%RH | | | |
| Store Temperature | -20°C~+60°C (-4°F~140°F) | | | |
| Store humidity | 10%RH~90%RH | | | |

Air Velocity & Temperature measurement, Max/Min/Average/Current reading, °C°F temperature unit selection, Data hold, LCD backlight display, Manual, Auto power shut off, Low battery indication

DIGITAL ANEMOMETER G-TECH AVM-03 WITH CFM/CMM + USB



| FUNCTIONS : | | |
|--|--|---|
| * Measurement of wind velocity temperature and flow | | ✓ |
| * Measurement of maximum & min. wind velocity temperature & flow | | ✓ |
| * Measurement of 2/3 Vmax and average wind flow | | ✓ |
| * Memory of 500 records | | ✓ |
| * Retractable drag rod | | ✓ |

SPECIFICATIONS

Wind Velocity measurement

| Unit | Wind Velocity | Resolution | Lowest point of Start value | Accuracy |
|---------|---------------|------------|-----------------------------|----------|
| m/s | 0.0-45.0 | 0.001 | 0.3 | ±5% ±0.1 |
| ft./min | 0.0-8800 | 0.01/0.1/1 | 60 | ±5% ±20 |
| knots | 0.0-88.0 | 0.01/0.01 | 0.6 | ±5% ±0.2 |
| km/h | 0.0-140.0 | 0.001 | 1 | ±5% ±0.4 |
| mph | 0.0-100 | 0.001/0.01 | 0.7 | ±5% ±0.2 |

Wind flow range :

| Unit | Range | Resolution | Area |
|----------------|----------|------------|------------|
| CFM (FT³ /MIN) | 0-999900 | 0.001-100 | 0.001-9999 |
| CMM (M³ /MIN) | 0-999900 | 0.001-100 | 0.001-9999 |

Air Temperature range Wind Temperature

| Unit | Scale | Resolution | Accuracy |
|------|------------|------------|----------|
| °C | 0.0-45.0 | 0.001-100 | ±1.0°C |
| °F | 32.0-113.0 | 0.001-100 | ±1.8°F |

DIGITAL ANEMOMETER G-TECH AVM-04 WITH CFM + USB + BT



| FUNCTIONS : | |
|--|---|
| * Measurement of wind speed and temperature | ✓ |
| * Humidity Measurement | ✓ |
| * Wind chill indicator | ✓ |
| * Real-time measurement of wind speed and average wind speed | ✓ |
| * Measurement of maximum, minimum & average wind speed | ✓ |
| * Measurement of air volume | ✓ |

SPECIFICATIONS

Wind Velocity measurement

| Unit | Measurement range | Resolution | Threshold | Accuracy |
|---------|-------------------|------------|-----------|----------|
| m/s | 0~30 | 0.01 | 0.3 | ±5% ±0.1 |
| ft./min | 0~5860 | 1.968 | 60 | ±5% ±20 |
| knots | 0~55 | 0.019 | 0.6 | ±5% ±0.2 |
| km/h | 0~90 | 0.036 | 1 | ±5% ±0.4 |
| mph | 0~65 | 0.022 | 0.7 | ±5% ±0.2 |

Air volume measurement

CMM : 0-999900m³/min

CFM :0-999900ft³ /min

| Unit | Measurement range | Resolution | Area |
|----------------|-------------------|-------------|--------------|
| CFM FT /MIN | 0-999900 | 0.001 - 100 | 0.001 - 9999 |
| CMM M /MIN | 0-999900 | 0.001 - 100 | 0.001 - 9999 |

Wind temperature measurement

| Unit | Measurement range | Resolution | Accuracy |
|--------------|-------------------|------------|----------|
| °C | -10°C ~ 45°C | 0.1 | ±2°C |
| °F | 14°F ~ 113°C | 0.2 | ±3.6°F |
| Power Supply | 9V Battery (6F22) | | |

**DIGITAL ANEMOMETER
G-TECH AVM-01**



Features :

- * Wind chill indicator : During measurement, if wind temperature is below 0°C, wind chill icon will light up on the screen.
- * High or low wind velocity alarm : When wind velocity is over high value or lower than low value setting, Hi or low icon will flash.
- * The alarm value of high and low wind velocity can be set through APP.

SPECIFICATIONS :

| Wind velocity measurement | | | |
|------------------------------|--|------------|-----------|
| Unit | Measurement range | Resolution | Threshold |
| m/s | 0-30 | 0.1 | 0.3 |
| ft/min | 0-5860 | 19 | 60 |
| Knots | 0-55 | 0.1 | 0.6 |
| km/h | 0-99 | 0.3 | 1 |
| mph | 0-65 | 0.2 | 0.7 |
| WIND TEMPERATURE MEASUREMENT | | | |
| Unit | Measurement Range | Resolution | |
| ° C | -10 °C +- 45 °C | 0.1 | |
| ° F | 14° F - 113° F | 0.18 | |
| Battery | Three 1.5V AAA | | |
| Temp. Sensor | Negative Temp. co efficient Resistance | | |
| Operation Temp. | -10° C +- 50° C (14° F - 122° F) | | |
| Operation Humidity | Less than 90% RH | | |
| Storage Temp. | -40° C +- 60° C (-40° F - 140° F) | | |

**HOT WIRE ANEMOMETER
G-TECH AVM-08 WITH USB**



- * Measurement of maximum and minimum air velocity
- * Data Holding, storing and deleting function
- * Low battery indicating function
- * Auto Power off
- * Memory of 350 records
- * Backlight
- * Connection to PC with USB cable
- * Large LCD display

Wind Velocity Range

| Unit | Air Velocity | Resolution | Accuracy |
|--------|--------------|------------|------------|
| m/s | 0.0-30.0 | 0.001 | ± 3% ± 0.1 |
| Ft/min | 0.0-5860 | 0.01/0.1/1 | ± 3% ± 20 |
| Knots | 0.0-55.0 | 0.01/.1 | ± 3% ± 0.2 |
| Km/h | 0.0-90.0 | 0.001 | ± 3% ± 0.4 |
| Mph | 0.0-65 | 0.001/0.01 | ± 3% ± 0.2 |

**DIGITAL MULTIPURPOSE ANEMOMETER G-TECH AVM-05
8 IN 1**



FUNCTIONS :

8 IN 1 MULTIFUNCTION METER

Measuring function : Measuring the value of temperature, humidity, wind chill, dew point, wind speed, barometric pressure, altitude and illumination

Date saving function : Manually saving and automatically recording data

SPECIFICATIONS

| Measuring Item | Measuring range | Resolution | Accuracy | Response time |
|----------------|-----------------|------------|-----------------|---------------|
| Temperature | -20.0~60.0°C | 1.0°C | ± 1.0°C | 1S |
| Humidity | 0~100RH | 0.1%RH | ± 5% RH | 1S |
| Wind Chill | -40~10.0°C | 1.0°C | ± 2.0°C | 1S |
| Dew point | -40~60.0°C | 1.0°C | ± 2.0°C | 1S |
| Wind speed | 0.7~30.0m/s | 0.1m/s | ± 3% or ±0.3m/s | 1S |
| Barometric | 300~1100hPa | 0.1hPa | ± 1.0hPa | 1S |
| Altitude | -500~900m | 1m | - | 1S |
| Illumination | 0~55000Lx | 1Lx | ± 3% | 1S |
| Size | 48x21.2x122mm | | | 1S |

DIGITAL LUX METER 50000 LUX G-TECH LX-101A



| Specification | Range |
|---------------|-----------------------------|
| Display | 18MM (0.7") LCD |
| Range | 0 to 50,000 Lux (03 Ranges) |
| Over-Input | Indication of "1" |
| Sampling Time | 0.4 second |
| Range | 0 to 2000 Lux |
| Resolution | 1Lux |
| Accuracy | ± 5% + 2d |
| Range | 2,000 to 19.999 Lux |
| Resolution | 10 Lux |
| Accuracy | ± 5% + 2d |
| Range | 20,000 to 50,000 Lux |
| Resolution | 100 Lux |
| Accuracy | ± 5% + 2d |

9V Battery, User Manual, Carrying case

LUX METER G-TECH LX 102 WITH USB



| | |
|----------------------------------|---|
| Measurable Objects | illumination and temperature, difference value, Max value, min value of illuminance & temp. Integrating illuminance and integral time & average integrating illuminance Silicon diode |
| Photoelectric element | Silicon diode NTC thermistor |
| Thermal probe | Total measuring range 0-200,000 Lux into |
| Illuminance Measuring range | four ranges x1: 0~199.9 Lux x10: 200~1999.9 Lux x100: 2000~19999.9 Lux x1000: 20000~200,000 Lux -40° C ~ 409° C |
| Temperature measuring range | 0-40°C |
| Illuminance accuracy | ±3% rdg (below 10000 Lux) |
| Temperature accuracy | ± 1.0° C |
| Units of illuminance and temp. | Four combination of units are available |
| Illumination data storage | Lux / °C , Lux / °F, FC / °C, FC / °F Automatic: upto 1900 groups of data can be stored, LuxLAB is used to set the storage cycle and whether to start or stop storage. Manual : upto 60 group of data can be stored. weather to store is determined manually. |
| LCD display update frequency | Twice per second |
| Operating temperature / humidity | 0° C ~0° C, 10~90% RH |
| Storage temperature / humidity | -20° C ~ 50° C, 10~90% RH |

LUX METER G-TECH LX 103



| | |
|--------------------------------------|---|
| Measuring Function | illumination and temperture, difference value, Max value, min value of illumination |
| Main parts of photometer head | Photodiode+cosines correction filter |
| Temperature probe | NTC thermister |
| Illuminance measuring range | Total masuring range 0-200,000 Lux into four ranges x1: 0~199.9 Lux x10: 200~1999.9 Lux x100: 2000~19999.9 Lux x1000: 20000~200,000 Lux |
| Temperature measuring range | -9.9° C ~ 49.9° C |
| Illuminance accuracy | ± 3% rdg (below 10000 Lux) |
| Temperature accuracy | ± 4% rdg (below 10000 Lux) |
| Temperature accuracy | ± 1° C |
| Units of Illuminance and temperature | Four combination of units are available Lux / °C , Lux / °F, FC / °C, FC / °F |
| Storage of | Automatic Max number of data group is 1000 and storage cycle is set by |

**HUMIDITY & TEMPERATURE METER
G-TECH HT-301**



Features :

- * Ambient Temperature, Dew Point Temp. & Wet bulb Temperature Fast Response Time.
- * Minimum & Maximum value reading
- * Large Screen LCD and backlight
- * Auto Power off (APO)

Technical Data :

| | Range | Precision | Max. Response |
|-------------------------|-------------------------------|------------|---------------|
| Surrounding Temperature | -20° C ~ 70° C (4° F~ 158° F) | ± 1° C [1] | 30s |
| RH range | 0% ~ 100% RH | ± 4% RH[2] | 30s |
| Dew Point range | -20° C~ 50° C | ± 2° C [3] | 30s |
| Wet bulb range | -20° C~ 50° C | ± 2° C [4] | |
| Operating current | Without backlight : | | |
| | about 13mA | | |
| Operating current | With backlight : | | |
| | about 17mA | | |

**TEMPERATURE & HUMIDITY DATA LOGGER
G-TECH HT-305**



This product is mainly used to measure temperature and humidity. It adopts high-precision digital sensors and has LED indicators in three colours of red, green and blue, which usually indicate the current working status

Features :

- Memory of 16000 Data
- Max/Min. Value
- Hold data retention
- Buzzer alarm & Time display
- Temperature & Humidity function
- Backlight
- USB connection for data logging
- REC (Record) function
- Built in rechargeable battery
- Wet Bulb & Dew point function

Technical Data :

| | Range | Accuracy |
|------------------------|----------------------------|----------|
| Temperature range | -30°C~+80°C (-22°F~+176°F) | ±1°C |
| Temperature Resolution | 0.01°C | - |
| RH Range | 0%RH~100%RH | ±3% RH |
| RH Resolution | 0.01% | - |
| Wet bulb | 0°C~+80°C (32°F~176°F) | ±1°C |
| Dewpoint | -30°C~+80°C (-22°F~176°F) | ±1°C |

**DIGITAL SOUND LEVEL METER
SL 101**



**Compact
Rugged
Reliable**

Features :

| | |
|---------------------|---------------|
| Measuring Range | 30 - 130dBA |
| Accuracy | ± 1.5 dB |
| Frequency Response | 31.5Hz - 8KHz |
| Resolution | 0.1dB |
| Frequency Weighting | A Weighting |

Sound Level Measurement, Min/Max/Lock Current Value
Hold the measurement data - LCD Backlight function
Manual / Auto Shutoff

**SOUND LEVEL METER
G-TECH SL 102**



Specification

| | |
|---------------------|---|
| Measuring Range | 30~130dBA, 35~130 dBC |
| Accuracy | ± 1.5dB (Under reference conditions) |
| Frequency Range | 31.5Hz~8.5KHz |
| Level Range | 30~80, 50~100, 60~110, 80~130. 30~130dB |
| Linearity Range | 50dB / 100dB |
| Frequency Weighting | A/C |
| Digital Display | 4 digits |
| Resolution | 0.1dB |
| Sample Rate | 2 times / second |

Range

Bar Graph : 50 dB scale at 1dB step for monitoring current sound pressure level display ▶ Sample rate : 20 times / second
Over indication : Over/Under ▶ Time weight : Fast / Slow
▶ Microphone : 1/2 Inch electret condenser microphone
▶ Max Hold : MAX

**SOUND LEVEL METER
SL 103**



Specification :

| | |
|--------------------------|--|
| Calibrating sound source | 94dB @ 1kHz |
| Measuring range | 30~130dBA (Auto ranging) |
| Accuracy | ± 1.5dB (reference sound pressure standard 94dB @ 1KHz) |
| Frequency response | 31.5 ~ 8.5KHz |
| Resolution | 0.1dB |
| Frequency waiting | A/C |
| Analogy bar graph | 2dB / 1 Bar graph |
| Display update time | 2 times/sound (Fast) 1 time/sound (Slow) |
| AC signal Output | 20 mVrms/full Barograph : output impedance is approx 600 Ω |
| DC signal Output | 33mV/dB |
| Sampling rate | Fast (125ms) / Slow (1Sec.) |
| Power supply | 6V (4x1.5V AA Battery) |

Range :

dBA/dBc measuring unit, AC/DC function, White backlight
Time & Date display, Auto Off function setup, (Max/Fast/Slow)
Function

Hard Case, Manual, Adopter, Batteries, Tripod stand,
Sponge ball

**SOUND LEVEL METER + USB
SL 104**



Specification :

| | |
|------------------------|---|
| Measuring range | 30~130dBA 35~130dBC |
| Accuracy | ± 1.5dB |
| Frequency range | 31.5Hz~8KHz |
| Frequency weighting | A and C |
| AC output | 4Vrms/ full bar graph, Output Impedance is about 600Ω |
| Dynamic characteristic | FAST (High speed)/ SLOW (low Speed) |
| Microphone | ½ inch polarization capacitance microphone |
| Power supply | |

Sound level measurement, LCD backlight, A/C frequency weighting selection, Fast/Slow time weighting selection
Maximum lock, Both AC & PWM signal output are available
Data recording function (4700 data), USB connection function
Real time data sampling analysis & printing graph & data functions

NON-CONTACT TACHOMETER G-TECH 2234C



Specification

Display
 Sampling Time
 Test Range
 Range I
 Range II
 Accuracy
 Resolution
 Memory
 Detecting Distance
 Operating Temp.
 Operating Humidity
 Power Supply

Range

5 digits (0.7") LCD White Backlight Display
 1 sec (Over 60 RPM)
 Auto ranging
 2.5-999.9 RPM
 1000-99,999 RPM
 $\pm (0.05\% + 1\text{digit}) 0.1 \text{ RPM (0.5-999.9 RPM)}$
 1 RPM (above 1000 RPM)
 Last Value, Max Value, Min. Value
 50 to 500 mm
 0-50°C
 Less Than 80% RH
 4x1.5V AA Size Battery

User Manual, Carrying Case & 2pcs of Reflecting tape (350mm)

CONTACT TACHOMETER G-TECH 2235B



Specification

Display
 Test range
 Resolution
 Accuracy
 Sampling time
 Test range select
 Memory call option
 Time base
 Battery

Range

5 digits, 18mm (0.7 inch LCD screen)
 Contact Tach 0.5~19999 RPM
 0.1RPM (0.5 to 19999 RPM)
 $\pm(0.05\% + \text{Digit})$
 0.8 Second (Over 60 RPM)
 Auto range
 Max./Min./Last value
 Quartz Crystal
 1.5V Battery (AA size) x 04

COMBINED CONTACT/NON-CONTACT TACHOMETER G-TECH 2236C



Specification

Display
 Sampling Time
 Test Range
 Range I
 Range II

 Accuracy

 Resolution

 Memory
 Detecting Distance
 Operating Temp.
 Operating Humidity
 Power Supply

Range

5 digits (0.7") LCD White Backlight Display
 0.5 sec (Over 120 RPM)
 Auto ranging
 non contact 2.5 - 99999 RPM
 contact 0.5 - 19999 RPM
 Surface speed 0.05 - 1999.99m/min.
 $\pm (0.05\% + 1\text{digit})$
 non contact 0.1 RPM (2.5-9.999RPM)
 contact 0.1RPM (0.5-999.9RPM)
 1 RPM over 1000 RPM
 1 RPM over 1000 RPM
 Surface speed 0.01m/min. (0.05 - 99.9m/min.
 0.1m/min (over 100m/min)
 Last Value, Max Value, Min. Value
 50 to 500 mm (Photo)
 0-50°C
 Less Than 80% RH
 4x1.5V AA Size Battery

User Manual, Carrying Case, & 2pcs of Reflecting Tape (350mm), RPM adapter (cone & funnel)

**ELECTROMAGNETIC RADIATION TESTER
G-TECH EMR 822A**



Features

- * One Instrument with two uses, It can test the electric field and the magnetic field radiation at the same time
- * Sound Light Alarm : When the test result exceeds the safe value, the instrument alarm automatically
- * Data locking : One-key lock of the radiation value
- * LCD graphic display of the radiation value trend
- * Radiation assessment : Remind you whether the radiation value is safe or not
- * Fashionable design : Easy on hand operations, it is easy to move or make field measurement.

| | Electric Field | Magnetic field |
|-----------------------|--------------------------------|------------------|
| Unit | V/m | uT |
| Precision | 1V/m | 0.01uT |
| Range | 1V/m-1999V/m | 0.01uT - 99.99uT |
| Reading display | 3-1/2 digit LCD | |
| Testing bandwidth | 5Hz-3500MHz | |
| Test mode | Bimodule synchronous test | |
| Over range indication | LCD display Max. measure range | |
| Operating temperature | 0° C ~ 50° C | |

**INFRARED THERMOMETER
MODEL G-TECH MT2**



Specification

Range

- | | | |
|------------------------|---------------------------|---|
| Temperature range | -50°C~380°C (-58°F~716°F) | ✓ |
| Accuracy | ±2% | ✓ |
| Response time | 500ms | ✓ |
| Emmissivity (EMS) | Fixed, 0.95 | ✓ |
| Emmissivity (EMS) | Adjustable, 0.1to1.0 | ✓ |
| Distance to spot ratio | 12:1 | ✓ |
| MAX temperature | | ✓ |
| Low Battery Indication | | ✓ |
| LCD Display | | ✓ |
| Backlight Selection | | ✓ |
| Automatic Data Hold | | ✓ |
| Auto Power Shut Off | | ✓ |

2 x AAA batteries , Manual

**INFRARED THERMOMETER
MODEL G-TECH MT4**



Specification

Range

- | | | |
|------------------------|---------------------------|---|
| Temperature range | -50°C~550°C (-58°F~716°F) | ✓ |
| Accuracy | ±2% | ✓ |
| Response time | 500ms | ✓ |
| Emmissivity (EMS) | Fixed, 0.95 | ✓ |
| Emmissivity (EMS) | Adjustable, 0.1to1.0 | ✓ |
| Distance to spot ratio | 12:1 | ✓ |
| MAX temperature | | ✓ |
| Low Battery Indication | | ✓ |
| Color LCD Display | | ✓ |
| Backlight Selection | | ✓ |
| Automatic Data Hold | | ✓ |
| Auto Power Shut Off | | ✓ |

2 x AAA batteries , Manual

**INFRARED THERMOMETER
G-TECH MT5**



Specification

| | |
|--------------------|----------------------------|
| Temperature range | -50°C~750°C (-58°F~1382°F) |
| Accuracy | ±2% |
| Response time | < 1s |
| Optical Resolution | 12:1 |
| Emmissivity (EMS) | 0.1 to 1.0 adjustable |
| Alarm | High / Low |
| Laser Target | ✓ Dual |
| Data Hold | ✓ |
| Back Light | ✓ |
| Max/Min/Avg | ✓ |
| Alarm Set | ✓ |
| Auto Power Off | ✓ |
| °C / °F | ✓ |

Range

9V Battery Power Supply
Manual, Case

**INFRARED THERMOMETER
G-TECH MT8**



Specification

| | |
|--------------------|--------------------------------|
| Temperature range | -50°C~1100°C (-58°F~2012°F) |
| Accuracy | ±2% |
| Response time | < 1s |
| Optical Resolution | 50:1 |
| Emmissivity (EMS) | Fixed at 0.1 to 1.0 Adjustable |
| Laser Target | ✓ Dual |
| Data Hold | ✓ |
| Back Light | ✓ |
| Max/Min/Avg | ✓ |
| Alarm Set | ✓ |
| Auto Power Off | ✓ |
| °C / °F | ✓ |

Range

9V Battery Power Supply
Manual, Case

**INFRARED THERMOMETER
G-TECH MT13**



Specification

| | |
|--------------------|-----------------------------|
| Temperature range | -50°C~1300°C (-58°F~2372°F) |
| Accuracy | ±2% |
| Optical Resolution | 50:1 |
| Emmissivity (EMS) | 0.1 ~ 1.0 Adujustable |
| Laser Target | ✓ Dual |
| Resolution | 500ms |
| Response time | 1% or 1°C |
| Repeatability | ✓ |
| Laser Target | ✓ |
| Data Hold | ✓ |
| Back Light | ✓ |
| Max/Min/Avg | ✓ |
| Alarm Set | ✓ |
| Auto Power Off | ✓ |
| °C / °F | ✓ |

Range

9V Battery Power Supply
Manual, Hard Case

**INFRARED THERMOMETER
G-TECH MT16**



Specification

| | |
|--------------------|-----------------------------|
| Temperature range | -50°C~1600°C (-58°F~2912°F) |
| Accuracy | ±2% |
| Response time | <0.15s |
| Optical Resolution | 50:1 |
| Emisivity | 0.1 ~ 1.0 Adujustable |
| Laser Target | ✓ Dual |
| Data Hold | ✓ |
| Back Light | ✓ |
| Max/Min/Avg | ✓ |
| Alarm Set | ✓ |
| Auto Power Off | ✓ |
| °C / °F | ✓ |
| 9 Data Storage | ✓ |

Range

9V Battery Power Supply
Manual, Hard Case

INFRARED THERMOMETER GTX16 / GTX18 / GTX22 + USB



| FUNCTION | GTX16 | GTX18 | GTX22 |
|------------------------------------|-------|-------|-------|
| Position the laser | ✓ | ✓ | ✓ |
| °C/°F | ✓ | ✓ | ✓ |
| Backlit screen | ✓ | ✓ | ✓ |
| Battery level reminder | ✓ | ✓ | ✓ |
| Data retention | ✓ | ✓ | ✓ |
| Data storage and reading | ✓ | ✓ | ✓ |
| High & Low temperature alarm | ✓ | ✓ | ✓ |
| Max., Min., Dif, Avg Value display | ✓ | ✓ | ✓ |
| Adjustable emissivity | ✓ | ✓ | ✓ |
| Automatic shutdown | ✓ | ✓ | ✓ |
| USB transfer function | ✓ | ✓ | ✓ |

| SPECIFICATIONS | GTX16 | GTX18 | GTX22 |
|-----------------------|--|----------------------|----------------------|
| Temperature range | -30°C~1650°C | 200°C~1850°C | 200°C~2200°C |
| | (-22°F~3002°F) | (392°F~3362°F) | (392°F~3992°F) |
| Repeatability | 1% of reading or 1°C | 1% of reading or 1°C | 1% of reading or 1°C |
| Distance to spot size | 50:1 | 80:1 | 80:1 |
| Spectral response | 8-14 nm | 900-1700 nm | 900-1700 nm |
| Accuracy | >0°C:±1.5°C or ±1.5% Which ever is greater | | |
| | <0°C:±3°C | | |
| Emissivity | 0.10-1.00 adjustable (pre-set 0.95) | | |
| Dimension | 141 x 60 x 200mm | | |
| Power supply | 9V battery | | |

THERMAL IMAGER G-TECH TIC 24/TIC 25



Function

- With small volume, the product is easy to operate and has strong function. it is the ideal selection for electric power, electronic manufacturing, Industrial inspection and other fields.
- With a visible light camera, The thermal images and visible images are stored in the device and can be read through USB.
- The radiation coefficient may be adjusted to increase the measurement accuracy of objects with half reflection surface.
- The radiation coefficient may be adjusted to increase the measurement accuracy of objects with half reflection surface.
- The highest temperature and lowest temperature cursor may guide the users to the areas with highest and lowest temperature of the thermal images. The selectable color palette.

Application

- The inspection of electric equipment, lines of transmission and transformers.
- Search of concealed fire source in fire control.
- Personnel search and rescue and commanding at fire site.
- Make analysis of the leakage position and heat loss of thermal pipeline and heating equipment.
- Determine the position of heating failure of the operation train.
- Analysis of rationality of wire of microelectronic industry.
- Night monitoring of security departments.

| | | G-TECH TIC 24 | G-TECH TIC 25 |
|---------------------------------|---|--|----------------------|
| Infrared Thermal Imaging | Resolution | 120 x 90 | 256 x 192 |
| | Response Wave Band | 8 - 14um | |
| | Frame Rate | 25Hz | |
| | NETD | 70mK@25°C | |
| | Field angle | 38° x 50° | 55° x 83° |
| | Lens | 2.3mm F1.1 | 3.2mm |
| | Measurement range | Low temperature : 20°C ~ 150°C, High temperature 120°C ~ 400°C | |
| | Temperature Measurement Accuracy | ± 2°C or reading ± 2% | |
| | Temperature Measurement | Supporting the highest point, Lowest point and central point temperature measurement and area temperature measurement of the full screen | |
| Color Board | Iron red, dazzling white, hot black, Iridescent, hot red, high contrast, hot green, molten lava | | |
| Visible Light | Resolution | 720P | |
| | Field angle | 55° x 83° | |
| Image Display | Screen size | 2.8" | |
| | Image mode | Edge Blending, additive blending, picture in picture, single infrared single visible light | |
| Universal | Language | English | |
| | Connector | USB type - C (Supporting charging and data transmission) | |
| | Battery | 2600mAh Lithium battery | |
| | Operating time | Its lasts about 4 hours on a full battery charge | |
| | Operating temperature | -10°C ~ +60°C | |
| | Storage temperature | -40°C ~ +85°C | |
| | Product size | 70mm x 80mm x 200mm | |
| | Net weight | 310g | |
| Package size | 115mm x 170mm x 300mm | | |
| Storage | Capacity | 8G built-in memory, can store more than 20,000 pictures | |
| | Picture storage format | JPG | |
| | Video format | MP4 | |

DIGITAL INSULATION TESTER WITH MULTI METER FUNCTION GTECH GT9510



| Specification | Range | Accuracy |
|-----------------|--|----------|
| Display | 3 3/4 Digit , Jumbo LCD Display, 3999 Counts | |
| Test Insulation | at 250V/500V/1000V With a Ohms range of 0.25m - 40G Ohms | |
| DC Voltage | 400mV-4-40-400-1000V | ± 0.5% |
| AC Voltage | 4-40-400-700V | ± 0.8% |
| DC Current | 40mA - 400mA | ± 1.0% |
| AC Current | 40mA - 400mA | ± 1% |
| Resistance | 400Ω-40k-400k-4M-40MΩ | ± 0.8% |
| Capacitance | 40nF-400nF-4uF-40uF | ± 3% |
| Frequency | 40Hz-400Hz-4KHz-40KHz-4MHz | |

Dual Display, Data Hold, Continuity test, 1.5V x 6A Battery Supply Soft Carrying Case

DIGITAL INSULATION TESTER WITH MULTI METER FUNCTION GTECH GT9525



| Specification | Range | Accuracy |
|-----------------|---|----------|
| Display | 3 3/4 Digit Jumbo LCD Display, 3999 Counts | |
| Test Insulation | at 500V/1000V/2500V With a Ohms range of 0.5MΩ - 40GΩ | |
| DC Voltage | 400mV-4-40-400-1000V | ± 0.5% |
| AC Voltage | 400mV-4-40-400-700V | ± 0.8% |
| DC Current | 40mA - 400mA | ± 1.0% |
| AC Current | 40mA - 400mA | ± 1% |
| Resistance | 400Ω-40k-400k-4M-40MΩ | ± 0.8% |
| Capacitance | 40nF-400nF-4uF-40uF | |
| Frequency | 40Hz-400Hz-4KHz-40KHz-4MHz | ± 3% |

Dual Display, Data Hold, Continuity test, 1.5V x 6A Battery Supply Soft Carrying Case

DIGITAL INSULATION TESTER 5000V MULTIRANGE GTECH GT9550



| Specification | Range |
|-----------------------|--|
| Display | LCD Display, 1999 Counts |
| Test Voltage | 500V/1000V/2500V/5000V |
| Insulation Resistance | 1M Ohm - 200G Ohms |
| Accuracy | 3% of Rdg+5digits (1M-200M Ohms) 5% of Rdg+5digits (200M-10G Ohms) 10% of Rdg+5digits (10GM-200G Ohms) |
| AC Voltage | 750V |
| Range Select | Auto |
| | <ul style="list-style-type: none"> ▶ Data hold ✓ ▶ Low Batt.indication ✓ ▶ Back Light ✓ ▶ HV Red Indication lamp light ✓ |

Dual Display, Data Hold, Continuity test, 1.5V x 6A Battery Supply Test Leads & Hard Carrying Case

INSULATION TESTER WITH TIMER & MEASUREMENT UPTO 1TOHMS, WITH PI & DAR G-TECH 3125A

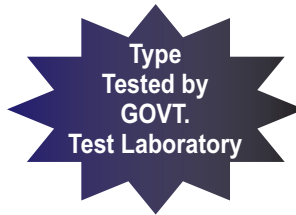


Timer measurement
Press ▲ or ▼ button, time can be set at a every 5sec from 00:00 to 01:00. after that rang time can be set at every 30 sec. Upto 60Min.

| Specification | Range |
|-----------------------|---|
| Rated Voltage | 500V/1000V/2500V/5000V |
| Testing Range | 500V:0.0~999M Ohms 1000V:0.0~1.99G Ohms 2500V : 1.99 ~ 99.9G Ohms 5000V : 0.0~1000G Ohms |
| Accuracy | ± 5% rdg ± 5 digits |
| DC/AC Testing Voltage | 30~600V |
| Resolution | 1.0V |
| Overload Protection | AC 1200V/10 Second |
| Withstand Voltage | AC8320V/5 Seconds |
| Insulation Resistance | 1000M Ohms / DC 1000V |
| Line Probe | ✓ Polarization Index ✓ DAR ✓ Timer ✓ |

Optional 12V adaptor operated or 1.5V x 8 Battery Power Supply Test Lead, Soft Carrying Case, Manual

**DIGITAL INSULATION TESTER WITH PI, DAR + USB
GT 3126/3127/3128/3129**



FEATURES

- Selectable test voltage
- Polarization index measurement facility
- AC/DC voltage measurement upto 750 V AC & 1000V DC
- Automatic discharge for capacitive circuit
- Guard & terminal Standard Approval
- IP-65, As per IS/IEC - 60529 - 2001
- Safety accordance with : IEC - 60068
- EMC in accordance with : IEC - 61000



PRODUCT INTRODUCTION

GT 3126/3127/3128/3129 digital insulation resistance meter, also name megohmmeter, high voltage insulation resistance tester is used for insulation resistance test, This instrument has a large LCD screen gray backlit display, data storage, data review, alarm, automatic discharge, charging, automatic shutdown and other functions. At the same time, it also has the function of measuring absorption ratio and polarization index of AC voltage and DC voltage.

It is suitable for measuring the resistance value of various insulating materials and the insulation resistance of transformers, motors, cables and electrical equipment.

At the same time, with step adjustable voltage function can output a variety of different voltage levels (such as 15kV models can produce 12kV and other voltage levels, a wider range use)

MODEL CONTRAST

| Model | GT3126 | GT3127 | GT3128 | GT3129 |
|----------------------------------|---------------------------------|---------------------------------|----------------------------------|------------------------------------|
| Rated applied voltage selectable | 100/250/500/ 1000/2500/5000V | 100/250/500/1000/ 2500/5000V | 250/500/1000/2500V 5000V/10KV | 500/1000/ 2500/ 5000V/10KV/15KV |
| Resistance limit range | 0.01MΩ ~ 2000GΩ | 0.01MΩ ~ 10TΩ | 0.01MΩ ~ 35TΩ | 0.01MΩ ~ 50TΩ |
| Resolution | 0.01MΩ | 0.01MΩ | 0.01MΩ | 0.01MΩ |
| Accuracy | ±3%rdg±5dgt | ±3rdg±5dgt | ±3%rdg±5dgt | ±3%rdg±5dgt |
| Output short-circuit current | ≥5mA | ≥6mA | ≥6mA | ≥6mA |

TECHNICAL PARAMETERS

| | |
|---|---|
| Function | Insulation resistance test, Voltage test, Current test, Capacitance test |
| Basic condition | 23°C±5°C, below 75%rh |
| DC voltage range | 0.1 ~ 1000V |
| AC voltage range | 0.1 ~ 750V |
| DC current measurement | 0.01nA ~ 6mA |
| Capacitance test | 10nf ~ 50uF |
| Absorption ratio and polarization index Measurement | Have |
| Power | 12V rechargeable battery |
| Backlight | Controllable gray screen backlight, suitable for use in dim places |
| Display mode | 4-bit large LCD display, gray screen backlight |
| Instrument size | 240mm (L) x 188mm (W) x 85mm (H) |
| USB interface | With USB interface, software monitoring, storage data can upload to computer, save & print |
| Communication line | USB communication line 1pc |
| Test line | High voltage rod red line 3 meters, high voltage test line black line 1.5 meters, green line 1.5 meters |
| Alarm function | When the measured value exceeds the alarm set value, an alarm prompt is issued |
| Instrument weight | 2720g (Including battery) |

**DIGITAL EARTH RESISTANCE TESTER
(3 TERMINAL METHOD) G-TECH 1520**

“G-TECH” Digital Earth Resistance Tester is a very versatile & Handy Instrument for checking Earth Resistance. It consists of the indicator & set of 2 spikes (stake) and connecting wires.

Earth resistance is measured by putting the spikes in the earth at distance of 5-10m & switching ON the instrument indicates the Earth Resistance directly in ohms.

Features :

- * Display LCD : 3 ½ Digit 2000 counts
- * Earth resistance measuring range : 0-20 ohm / 200 ohm / 2000ohm
- * Measures Earth Voltage (VAC) : 0-200VAC
- * Battery Operated
- * Data Hold Function
- * Small & Light Weight
- * Display back light



Accessories :Auxiliary Earth Bars (2 No's) & Test Leads, Carrying Bag Instruction Manual, Batteries

DIGITAL EARTH RESISTANCE TESTER GT1521 WITH USB (02/3 WIRE)



Function

- Ground resistance test, ground voltage test, low value resistance test
- Resistance range : 0.01Ω - 3000Ω
- Voltage range : 0.01V - 100V AC
- Measurement method :
Precision three-wire measurement
Simple two-wire measurement
- USB interface: with USB interface, software monitoring, storage data can be uploaded to the computer, save and print
- Data storage : 500 groups

PRODUCT INTRODUCTION

GT 1521 grounding resistance test, also known as three-wire resistance tester, grounding resistance tester etc., is a commonly used instrument for measuring common grounding resistance meter. It uses a large LCD gray screen backlight display and micro processor technology to meet the two-wire, three-wire test resistance requirements. Suitable for telecommunications, electricity, meteorology, gas stations, factory grounding networks, lighting rods and so on

PARAMETERS

| | | | |
|-------------------------|---|--------------------|--------------------------|
| Ground resistance range | 0.01Ω ~ 3000Ω | Resolution : 0.01Ω | Accuracy : ±1.5%rdg±3dgt |
| Ground voltage range | 0~ 100V AC | Resolution : 0.01V | Accuracy : ±1.5%rdg±3dgt |
| Function | Ground resistance measurement, ground voltage measurement, low value resistance measurement | | |
| Power | DC 6V 4.5Ah rechargeable battery, standby for more than 100 hours | | |
| Backlight | Controllable gray screen backlight, suitable for use in dim places | | |
| Measuring mode | Precise three-wire measurement simple two-wire measurement | | |
| Test line length | 3 strips : red 15m, yellow : 10m, green 5m each one | | |
| Simple test line | 2 strips : yellow : 1.6m, green : 1.6m each one | | |
| Auxiliary grounding rod | 2 PCS : φ10mm x 200mm | | |
| Alarm function | Alarm when the measured value exceeds the alarm setting value | | |
| Automatic shut down | The instrument automatically shuts down after about 15 minutes without operation | | |
| Weight | Instrument : 2397g (with battery), Test line : 850g (including simple test line, Auxiliary grounding rods : 425g (2 pcs), Instrument bag : 271g | | |

DIGITAL EARTH RESISTANCE TESTER GT1523 (2/3/4 WIRE TEST)



Function

- Two three four line test ground resistance, soil resistivity ground voltage
- Resistance range : 0.00Ω - 30.00kΩ
- Soil resistivity : 0.00Ω - 9999kΩm
- Ground voltage range : 0.00V - 600V AC
- Use voltage : below AC 600V
- Precision three-wire measurement
- Test Frequency : 128Hz
- Data storage : 500 groups
- Range automatic shift

PRODUCT INTRODUCTION

GT 1523 grounding resistance soil resistivity tester, also called four wire grounding resistance tester or the soil resistivity tester, is commonly used instrument for measuring grounding resistance. It used a large-size LCD gray-white screen backlight display and microprocessor technology to pass the micrometer, to use microprocessor control 2-wire, 3-wire 4-wire to test ground resistance and soil resistivity

GT 1523 has many grounding test function to quickly and comprehensively measure various parameters in the grounded network. It is a new generation grounding measurement instrument that replaces the traditional rocking table measurement it uses fast filtering technique to minimize interference. Store 500 sets of data at the same time.

PARAMETERS

| | | | |
|--------------------|--|---------------------|------------------------|
| Function | 2-wire, 3-wire, 4-wire test ground resistance, soil resistivity, ground voltage | | |
| Range | Ground resistance : 0.01Ω ~ 30.00kΩ | Resolution : 0.01Ω | Accuracy : ±2%rdg±5dgt |
| | Soil resistivity : 0.00Ω ~ 9999kΩm | Resolution : 0.01Ωm | Accuracy : ρ=2πaR |
| | Ground voltage : AC 0.00~600V | Resolution : 0.01V | Accuracy : ±2%rdg±3dgt |
| Power Supply | 1.5V (LR14) Alkaline battery 6 section | | |
| Measurement Mode | Precise four-wire, three-wire measurement, simple two-wire measurement test ground resistance | | |
| Shift | Grounding resistance : 0.00Ω~30.00kΩ automatic shifting Soil sensitivity : 0.00Ω~9999kΩm automatic shifting | | |
| Standard Test line | 4 strips : Red 15m, Black : 15m, yellow : 10m, green 10m each one strip | | |
| Easy Test line | 2 strips : yellow : 1.5m, green : 1.5m each one strip | | |
| Ground Voltage | Test below AC 600V (ground voltage measurement function can't be used to measure commercial power) | | |
| Data Storage | 500 groups, "MEM" storage instruction, "FULL" symbol indicates that storage is full | | |
| Alarm Function | Alarm when the measured value exceeds the alarm setting value | | |
| Automatic Shutdown | The instrument automatically shuts down after about 15 minutes without operation | | |
| Power Consumption | Standby : 40mA Max (Backlight off), Turn on backlight : 43mA Max, measuring : 20mA Max (Backlight off) | | |

DIGITAL DOUBLE CLAMP EARTH RESISTANCE TESTER GT1525 WITH USB (2/3/4 WIRE TEST)



Function

- Ground resistance, soil resistivity ground voltage, AC current
- Resistance range : 0.01Ω - 30.00kΩ
- Soil resistivity range : 0.00Ωm - 9999kΩm
- Voltage range : 0.00V - 100V AC
- Current range : AC 0.0mA ~ 1000A
- Measurement Method Precision 4-wire, 3-wire, simple 2-wire method, double clamp method.

PRODUCT INTRODUCTION

GT 1525 double-clamp multi-function grounding resistance tester combines a variety of measurement methods into one advanced grounding resistance tester. In addition to the traditional function of grounding resistance, it also has the unique function of unassisted ground measurement. It uses a large LCD gray screen backlight display and microprocessor technology, through the microprocessor -controlled 2-wire, 3-wire, 4-wire, selection method, double clamp method to test ground resistance. Large-diameter current clamp design, using double clamp design, using double jaw measurement technology, without the need to hit the auxiliary ground, without the need to isolate the grounding body and equipment to achieve on-line measurement.

TECHNICAL PARAMETERS

| | | | |
|---|--|---------------------|--------------------------|
| 2, 3, 4 Wire method for measuring ground resistance | 0.00Ω ~ 30.00kΩ | Resolution : 0.01Ω | Accuracy : ±2%rdg±5dgt |
| DC resistance | 0.00Ω ~ 30.00kΩ | Resolution : 0.1Ω | Accuracy : ±2%rdg±3dgt |
| Selection method for | 0.00Ω ~ 3000Ω | Resolution : 0.01Ω | Accuracy : ±2%rdg±5dgt |
| Double clamp method for measuring ground resistance | 0.01Ω ~ 100Ω | Resolution : 0.01Ω | Accuracy : ±10%rdg±10dgt |
| Soil resistivity | 0.00Ωm ~ 9999kΩm | Resolution : 0.01Ωm | Accuracy : ρ=2πaR |
| Power | 6V 4.5Ah lead-acid battery lasts more than 100 hours standby | | |
| Measurement method | Precise four-wire, three-wire measurement, simple two-wire measurement, selection method, double clamp for measuring ground resistance, sine wave, test frequency: 128Hz | | |
| Test Line | 6 strips : Red 15m, Black : 15m, yellow:1.5m, green:1.5m, each one strip | | |
| Auxiliary grounding rod | 4pcs : φ10mm x 200mm | | |
| Current clamp | 2pcs : Banana plug, caliber : φ50mm, Length 2m | | |
| USB interface | With USB interface, storage data can be uploaded to the computer, USB communication 1pc | | |
| Interference test | Automatic identification of interference signal, "NOISE" symbol indication when the interface voltage is higher than 5V | | |

Note : Ground voltage measurement function cannot be used to measure commercial power

**DIGITAL CLAMP ON EARTH TESTER
GT6100/6300**



FEATURES

- Resistance range : 0-1200Ω
- Current range : 0-20A
- Ω + A same screen display
- Quick self-test function without waiting
- Using fast filtering technology, strong anti-interference ability
- New design, long life clamp head
- 300 sets of storage

MODEL CONTRAST

| Model | GT6100 | GT6300 |
|-----------------------|--------------|--------------------|
| Resistance range | 0.01Ω ~ 200Ω | 0.01Ω ~ 1200Ω |
| Class type | Utility type | Multifunction type |
| Resistance resolution | 0.01Ω | 0.001Ω |
| Current range | - | 0.00mA~20A |
| Current resolution | - | 0.01mA |

PRODUCT INTRODUCTION

GT 6100/6300 clamp ground resistance tester is a new generation of groundless pile measurement method, It uses a brand new generation of LCD, black screen backlight display and microprocessor technology to measure the grounding resistance through inductive method, When measuring a grounded system with a loop. it is not necessary to disconnect the ground lead wire and no need for auxiliary electrodes.

It uses a fast filtering technique to minimize interference. At the same time store 300 groups of data.

TECHNICAL PARAMETERS

| | |
|----------------------------|--|
| Function | Ground resistance test, Loop resistance test, Leakage current test |
| Ω + A Synchronized display | Ω + A same screen display |
| Display mode | 4-digit LCD display, black screen design |
| LCD dimension | 46mm x 29mm |
| Meter dimension | W/T/H : 85MM x 58mm x 285mm |
| Clamp diameter | 55mm x 32mm |
| Sampling speed | About 2 times/second |
| Data review | "MR" symbol indication when reviewing data |
| Overflow display | Exceed measurement range overflow function : "OL" symbol display |
| Interference test | Automatic identify interference signal, "NOISE" symbol indication when the interference current is large |
| Alarm function | Alarm when the measured value exceeds the alarm setting value |
| Battery voltage | Real-time display of battery power, reminding timely charging when battery voltage is low |
| Automatic shutdown | "APO" instruction, automatic shutdown after 5 minutes boot |

**DIGITAL CLAMP ON EARTH TESTER WITH LEAKAGE
G -TECH GT-6200**



| Earth ground resistance | Range | Resolution | Precision |
|--------------------------|----------------|-------------------|------------------|
| | 0.01-99 Ohms | 0.01 Ohms | ± 1%+0.01 Ohms |
| | 1.0-49.9 Ohms | 0.1 Ohms | ± 1.5%+0.1Ohms |
| | 50.0-99.5 Ohms | 0.5 Ohms | ± 2.0% +0.5 Ohms |
| | 100-199 Ohms | 1 Ohms | ± 3.0% + 1 Ohms |
| | 200-395 Ohms | 5 Ohms | ± 6% + 5 Ohms |
| | 400-590 Ohms | 10 Ohms | ± 10% + 10 Ohms |
| | 600-1000 Ohms | 20 Ohms | ± 20% + 20 Ohms |
| Minium Resolution | 0.01 Ohms | | |
| | Range | Resolution | Precision |
| | 0 ~ 10mA | 0.05mA | ± 2.0% + 0.05mA |
| | 10mA ~ 100mA | 0.1mA | ± 2.0% + 0.3mA |
| | 100mA ~ 1000mA | 1mA | ± 2.0% + 3mA |
| Leakage Current | 1000mA ~ 5A | 5mA | ± 2.0% + 10mA |
| | 5A~30A | 10mA | ± 2.0% + 20mA |
| Conductor size | 65MM | | |

DIGITAL POWER QUALITY ANALYZER GT3100 + USB



Function

- Real-time waveform display (4 channels of voltage/current)
- True RMS values of voltage and current
- Peak current and voltage
- The maximum/minimum value of current and voltage over a period of time
- Phasor diagram display
- Harmonic measurement of each phase, upto the 50th harmonic
- Calculation of total harmonic distortion (THD)
- Active/reactive/apparent power value and total value of each phase
- Transformer K factor calculation

PRODUCT INTRODUCTION

GT 3100 Power Quality Analyzer is a comprehensive test instrument specially designed by our company for three-phase multi-functional, intelligent and simple man-machine operation. Easy to use, large LCD color display, high resolution, structure and other features, Simultaneous measurement of 4 currents (ABC three-phase and neutral current), 4 voltages (ABC three-phase voltage and neutral to ground voltage), current and voltage peaks, maximum and minimum values over a period of time. three-phase balance, short-time voltage flicker, transformer K factor, active power, reactive power, apparent power, power factor, displacement power factor, active energy, reactive energy, apparent energy, harmonic ratio, total harmonic distortion Degree : Display real-time waveform of current and voltage, phasor diagram, harmonic ratio column chart : dynamically capture voltage and current transients, monitor startup current, monitor various power parameters and generate alarm list, record test data for a long time and generate trend graph

This measurement and analysis instrument that can more quickly and accurately eliminate complex power system faults and monitor and maintain power quality parameters more comprehensively and systematically

TECHNICAL PARAMETERS

| | |
|--|--|
| Power | Rechargeable lithium battery 9.6V, External charger |
| Display mode | LCD color screen, 640dots x 480dots, 5.6inch, display field 116mm x 88mm |
| Instrument size | L/W/T : 240mm x 170mm x 68mm |
| Number of channels | 4 Channels voltage, 4 Channels current |
| Line voltage | 1.0V ~ 2000V |
| Phase voltage | 1.0V ~ 1000V |
| Current | 008 tip small current clamp : 10mA ~ 10.0A 020 round - mouth - current clamp : 1.0A ~ 100A 050 round - mouth - current clamp : 1.0A ~ 1000A Rogowski coil : 10A ~ 3000A Optional transformer : Instrument port input current 1mA ~ 500mA |
| Electric power and power quality parameter | W, VA, Var, PF, DPF, $\cos\phi$, $\tan\phi$ |
| Electric energy parameter | Wh, varh, Vah |
| Harmonic | have, 0 ~ 50 times |
| Total harmonic distortion | have, 0 ~ 50 times, each phase |
| Expert mode | have |
| Number of transient record groups | 150 groups |
| Voltage flicker | have |
| Start current mode | have, 100 second |
| Three-phase unbalance | have |
| Record | 300 days (Record 20 parameters at the same time, record 1 point every 5 seconds) |
| Minimum/maximum record group | yes, can measure the maximum and minimum within a period of time |
| Alarm | 40 different types of parameters selection, 12800 group alarm logs |
| Peak value | have |
| Phasor diagram display | automatic |
| Screen shot capacity | 60 |

DIGITAL POWER QUALITY ANALYZER GT3100 + USB

GT3100 Specification (page 2)

PRECISION INSTRUMENTS

| Measurement | Measuring range | Display resolution | Maximum error within the reference range |
|--|----------------------------|-------------------------------------|--|
| Frequency | 40Hz ~ 70Hz | 0.01Hz | ±(0.03)Hz |
| Phase voltage true RMS | 1.0V ~ 1000V | Minimum resolution 0.1V | ±(0.5%+5dgt) |
| Line voltage true RMS | 1.0V ~ 2000V | Minimum resolution 0.1V | ±(0.5%+5dgt) |
| DC Voltage | 1.0V ~ 1000V | Minimum resolution 0.1V | ±(1.0%+5dgt) |
| Current true RMS | 1mA ~ 1000mA | Minimum resolution 1mA | ±(0.5%+5dgt) |
| Phase voltage peak | 1.0V ~ 1414V | Minimum resolution 0.1V | ±(1.0%+5dgt) |
| Line voltage peak | 1.00 ~ 2828V | Minimum resolution 0.1V | ±(1.0%+5dgt) |
| Current peak | 10mA ~ 1414A | Minimum resolution 1mA | ±(1.0%+5dgt) |
| Peak factor | 1.00 ~ 3.99 | 0.01 | ±(1%+2dgt) |
| | 4.00 ~ 9.99 | 0.01 | ±(5%+2dgt) |
| Active power | 0.000W ~ 9999.9kW | Minimum resolution 0.001W | ±(1%+3dgt)Cosφ≥0.8 |
| | | | ±(1.5%+10dgt)0.2≤Cosφ<0.8 |
| Reactive power inductive & capacitive | 0.000VAR ~ 9999.9kVAR | Minimum resolution 0.001VAR | ±(1%+3dgt)sinφ≥0.5 |
| | | | ±(1.5%+10dgt)0.2≤Sinφ<0.5 |
| apparent power | 0.000VA ~ 9999.9kVA | Minimum resolution 0.001VA | ±(1+3dgt%) |
| Power factor | -1.000 ~ 1.000 | 0.001 | ±(1.5%+3dgt)Cosφ≥0.5 |
| | | | ±(1.5%+10dgt)0.2≤Cosφ<0.5 |
| Active energy | 0.000Wh ~ 9999.9MWh - | Minimum resolution 0.001Wh | ±(1%+3dgt)Cosφ≥0.8 |
| | | | ±(1.5%+10dgt)0.2≤Cosφ<0.8 |
| Reactive energy inductive & capacitive | 0.000VARh ~ 9999.9MVARh | Minimum resolution 1mA 0.001VARh | ±(1%+3dgt)Sinφ≥0.5 |
| | | | ±(1.5%+10dgt)0.2≤Sinφ<0.5 |
| Apparent energy | 0.000VAh ~ 9999.9MVAh | Minimum resolution 0.001VAh | ±(1+3dgt%) |
| Phase angle | -179° ~ 180° | 1° | ±(2°) |
| Tanφ(VA≥50VA) | -31.76 ~ 32.76 | Minimum resolution 0.001 | φ:±(1°) |
| Displacement power factor (DPF) | -1.000 ~ 1.000 | 0.001 | φ:±(1°) |
| Harmonic ratio contains 1 to 50 times (vrms>50V) | 0.0% ~ 99.9% | 0.1% | ±(1%+5dgt) |
| Harmonic angle (vrms>50V) | -179° ~ 180° | 1° | ±(3°) harmonic 1~25times |
| | | | ±(10°) harmonic 26~50times |
| Total harmonic rate (THD or THD-F)≤50 | 0.0% ~ 99.9% | 0.1% | ±(1%+5dgt) |
| Distortion factor (DF or THD-R)≤50 | 0.0% ~ 99.9% | 0.1% | ±(1%+10dgt) |
| Transformer K factor | 1.00 ~ 99.99 | 0.01 | ±(5%) |
| Three - Phase imbalance | 0.0% ~ 100% | 0.1% | ±(1%) |

CURRENT CLAMP CHARACTERISTIC

| Current clamp type | Current true value | Current true value Maximum error | Phase angle φ Maximum error |
|----------------------|--------------------------------------|----------------------------------|----------------------------------|
| 008 current clamp | 10mA ~ 99mA | ±(1% + 3dgt) | ±(1.5°), Arms≥20mA |
| | 100mA ~ 10.0A | ±(1% + 3dgt) | ±(1°) |
| 020 current clamp | 0.10A ~ 0.99A | ±(1% + 3dgt) | ±(1.5°) |
| | 1.00A ~ 100A | ±(1% + 3dgt) | ±(1°) |
| 050 current clamp | 1.0A ~ 9.9A | ±(2% + 3dgt) | ±(3°) |
| | 10.0A ~ 1000A | ±(2% + 3dgt) | ±(2°) |
| Optional transformer | Instrument input current 1mA ~ 500mA | Selected transformer error ±1% | Selected transformer error ±(1°) |

**DIGITAL RCD (ELCB) 230V TESTER
G-TECH 1812EL (230V)**



Functions :

- * This instrument is only suitable for **single phase 230V / 50Hz (with power supply voltage range.)**
- * Automatic data holding : After test is completed, the displayed measurement results are hold for certain period of time.
- * AUTO RAMP test : The AUTO RAMP test can test tripping current and time simultaneously.
- * Shutdown alarm function : After 3 minutes of operation, the instrument will let out a shutdown beep alarm.
- * Built in FUSE security protection.
- * Power supply : directly supplied by circuit under test (power supply 230V / 50Hz)

Specification :

Measurement range and measurement error (temperature: 23 + 5° C , Humidity : 45% - 75% RH, altitude 2000m):

RCD Test function :

| Functions | Operating Voltage (AC) | Rated Operating Current (LΔN) | Fault function time (MAX) | Accuracy | |
|----------------|-------------------------------|-------------------------------|-------------------------------|-------------------------|----------------------|
| | | | | Action Current | Action time |
| X 1/2 | 230V (Error range -15% ~ 10%) | 10/20/30/100/300/500 mA | 1000 ms | Error range : -10%~+10% | ± 0.6% rdg ± 8dgt |
| X 1 | | 10/20/30/100/300mA | 1000 ms | Error range : -10%~+10% | |
| | | 500mA | 300 ms | | |
| X 5 | Frequency : 50Hz | 10/20/30mA | 1000 ms | | |
| AUTO RAMP test | | 10/20/30/100 /300/500mA | (RAMP Increasing : step 10%) | Error range : -10%~+10% | |

**RCD (ELCB) / LOOP TESTER WITH USB
G-TECH 1813EL**



Functional Features :

- * Jump - Off current measurement
- * Jump - Off time measurement
- * Contact Voltage measurement
- * Loop resistance measurement
- * AC phase voltage measurement : 0V ~ 440V
- * Test current magnification : 0.5, 1 and 5
- * Fast/Slow current test gears : 10, 30, 100, 300, 500mA
- * L-PE fire-wire to ground voltage measurement
- * L-N fire-wire to zero voltage measurement
- * Autoramp triggered current measurement
- * Input voltage Indication
- * 1000 Sets of test results can be stored
- * Data stored in the host computer can be uploaded to a PC via the USB 2.0 interface
- * Backlight display & automatic turn-off features
- * Confirms to IEC/EN 61010-1, 1000V CAT III, 600V CAT IV safety standard,
- * Over-range display

| | | | |
|---|----------------------------|-------------|------------|
| Trip-out time | x1 IΔN300 (slow 500ms) | ±3ms | 0.1ms |
| | x5 IΔN40mslow (slow 150ms) | | |
| Trip out current | (0.2~1.1)IΔN | ±0.1IΔN | 0.05 IΔN |
| Contact voltage | 0~99.9V | ±(10%+0.2V) | 0.01, 0.1V |
| Alternating voltage (UI-N, UL-L, UL-E) | 0~440V | ±(3%+3V) | 1V |
| Frequency | DC, 45~65Hz | ±1Hz | 1Hz |
| Loop resistance (RL) | 0~19.9V | ±(10%+0.2V) | 0.01V |
| | 10.0~99.9V | | 0.1V |
| RL current test | 0.5IΔN | ±(10%+10d) | 0.05 IΔN |
| Multiplying power of test current | x0.5, x1, x5 | | |
| | | | |
| Current level IΔN | 10mA, 30mA, 100mA | | |
| | 300mA, 500mA | | |
| Trigger phase angle | 0° or 180° | | |

RCD Test Current Selection Table

| IΔN(mA) | IΔx1/2 (mA) | IΔx1 (mA) | IΔx5 (mA) | Auto(mA) |
|---------|-------------|-----------|-----------|----------|
| 10 | 5 | 10 | 50 | 10 |
| 30 | 15 | 30 | 150 | 30 |
| 100 | 50 | 100 | 500 | 100 |
| 300 | 150 | 300 | 1500 | 300 |
| 500 | 250 | 500 | | 500 |

DIGITAL LEAKAGE SWITCH TESTER GT 1526



FEATURES

- AC voltage range : 1.0V~750V
- DC voltage range : 1.0V ~1000V
- Test mode : eManual (Mt) or automatic (At) same screen display
- Power supply : 1.5V(AA) alkaline batteries 8pcs
- 4-digit super large LCD display, gray and white screen backlight
- New design, long life clamp head
- 300 sets of storage

PRODUCT INTRODUCTION

GT 1526 digital leakage switch tester, also known as leakage switch tester, leakage protector, residual current action protector tester, residual current action protector tester, is an essential testing instrument for engineering quality supervision stations and construction companies. The operating time and operating current of the leakage switch can be measured. it is mainly used to test the leakage action current, leakage non operating and leakage action time of the leakage protector it can be widely used in power supply departments. leakage protector manufacturer's, labor safety inspection department in construction, mining, machine tool and other industries as well as electricians.

GT 1526 digital leakage switch tester, composed of host, test line, etc. Simple and portable, 4-digit super large LCD display, gray and white screen display easy to operate and easy to use. Large-capacity storage of 500 sets of data, Voltage measurement range 1.0V ~ 1000V, measurement accuracy : $\pm 5\% \text{dgt} \pm 5 \text{dgt}$. The test leakage current is from 15 to 500mA which is divided to ten gears (15: 30: 50: 75: 100: 150: 200: 250: 300: 500mA and the test leakage current action time range is 0 to 999ms.

TECHNICAL PARAMETERS

| | |
|------------------|--|
| Function | Leakage protector action time measurement, leakage protector action current measurement, Voltage measurement |
| AC Voltage range | 1.0V ~ 750V |
| DC Voltage range | 1.0V ~ 1000V |
| Current gear | 15: 30: 50: 75: 100: 150: 200: 250: 300: 500mA |
| Test line | Test line red 1 meter, black 1 meter |
| Data storage | 500 groups, Flashing "FULL" symbol means storage is full |
| battery voltage | The battery voltage is insufficient, and the low battery symbol "" is displayed |

**COATING THICKNESS METER F & NF BOTH
G-TECH CM 8829 WITH PROBE & USB**



Measuring Principle : Magnetic Induction (F) Eddy current (N)
 Measuring Range : F(0-5000um) + N (0-3000um)
 Accuracy : (2% + 1um)
 Memory : 2000 reading
 Units : um, mm, mils
 Three 1.5 AAA battery
 Comes with 1m separated probe
 Alarm setting and backlight indication
 Connect with PC via USB and download reading

Accessories : External Probe, CD, Manual,
 Three Battery, USB Cable, Ferrous and non Ferrous metal, 5 Foil.

**COATING THICKNESS GAUGE
G-TECH GM 998**



Specification

| | Probe F | Probe N |
|-------------------------------|--|--|
| Principle | Magnetic Induction | Eddy Current |
| Range | 0~1500um 0~59.1mil | 0~1500um 0~59.1mil |
| Accuracy | $\pm (3\%+2\text{um})$ $\pm (3\%+0.08\text{mil})$ | $\pm (3\%+2\text{um})$ $\pm (3\%+0.08\text{mil})$ |
| Resolution | 0.1um/0.01mil | 0.1um/0.01mil |
| Calibration | Zero point | |
| Units | um, mil / Multi point | |
| Min. Curvature radius convex | : 1.5mm | |
| Min. Curvature radius concave | : 25mm | |
| Min. measuring are | : Diameter 6mm | |
| Min. thickness of substrate | 0.5mm (0.02") | 0.5mm (0.02") |
| Power | 2 x AAA Batteries | |
| Operation | Temp. : 0~40°C (32~104°F) | |
| Environment | Humidity : 20%~90%RH | |

**DIGITAL MOISTURE METER
WOOD + CONSTRUCTION MATERIAL
G-TECH 291**



Function

- 4 gears wood and 3 gears construction material selection
- Data lock
- Low battery indication
- Automatic/manual shutdown
- Backlight display

E. Comparison table of material grade

| Wood | Grade | Wood | Grade |
|------------------------------|-------|-------------------------|-------|
| Rhodes west teak | 1 | African white wood | 3 |
| Ormosia hosiei | 1 | Rose wood | 3 |
| Brazil walnut tree | 1 | Elm tree | 3 |
| Walnut tree | 2 | Gmelina chinensis benth | 3 |
| Apitong | 2 | Hemlock | 3 |
| White poplar | 2 | Dipterocarpus | 3 |
| Teak | 2 | Oak | 3 |
| Banya pine | 3 | Chinese red pine | 4 |
| Douglas fir / D.fir | 3 | Coquito | 4 |
| Lauan | 3 | Abies holophylla Maxim | 4 |
| Manchurian ash | 3 | Larch | 4 |
| European silver | 3 | Apitong | 4 |
| Maple | 3 | Birch | 4 |
| White ash | 3 | Basswood | 4 |
| Construction Material | | | |
| Cement martar | 5 | | |
| Lime martar | 6 | | |
| Brick | 7 | | |

| Specification | Grade | Range | Resolution |
|-----------------------|-------|-----------|------------|
| Name of Wood + y/° | 1 | 7.2%~40% | 0.10% |
| | 2 | 8.7%~50% | |
| | 3 | 10.6%~60% | |
| | 4 | 12.2%~70% | |
| | 5 | 0.7%~7.9% | |
| Construction material | 6 | 0.5%~8.5% | |
| Bricks | 7 | 0%~15.2% | |

**DIGITAL WOOD MOISTURE METER
G-TECH MD4G**



The Instruments is a dedicate one, which used to measure the containing water of wood, bamboo, cotton, paper etc.

Features :

- Digital large size LCD display
- Range : 5% to 40%
- Resolution : 1%
- High resolution and response quickly
- Data hold and can hold value
- Symbol and unit display can read the value conveniently
- Low battery symbol ⏻
- Dimension : 126x70x29mm
- Weight : approx 150g (including battery)
- Operating Temperature :
0°C to 40°C (32°F to 104°F), 0 to 70%RH

**PINLESS WOOD MOISTURE METER
G-TECH PMM 10**



Features

- * Pinless Wood Moisture Measurement
- * Moisture range 0.5% - 79.5%
- * 8 Kind of wood density group type
- * Temperature range 0 to 50° C
- * Backlight control function
- * Data hold function
- * Battery level indication
- * Auto power-off function

PAPER MOISTURE METER G-TECH GT292



FEATURES

- ON / OFF button, press this button to open the instrument power, LCD screen display, you can hold the current data if you short press this key for 1 second during testing, and press it again, the hold function exit
- After all your test, press this key for 3 seconds to turn off the power.
- MODE button, press this button, you can set the number of the test characteristic curve of the testing paper according to the type of the paper.
- Material humidity is displayed in the middle of the screen, and the material identification is displayed simultaneously with the corresponding material characteristic curve number.

| Adjustable Paper type | Characteristic Curve |
|-----------------------|----------------------|
| Common writing paper | 1 |
| Coated paper | 2 |
| Corrugated box | 3 |
| New paper | 4 |

- Open the protection cover and press the sharp nail on the paper, make it contact the paper adequately, LCD shows the moisture content of the paper.
- Press MODE several times until the needed type of material is displayed on the screen.
- Press °C / °F button to select the temperature unit symbol. the temperature is displayed at the top of the screen.

SPECIFICATION

- Resistance (conductivity measurement) moisture humidity, sensor, temperature sensor
- Parameter : %humidity (paper) °C / °F temperature
- Measuring range : 5% to 40%
- Resolution : 0.1%, 1°C
- Max. error (at 25°C, ±digit)
- Moisture test % : ±2%; temperature test : ±2°C
- Measurement rate : 0.5 seconds
- Protection class : IP 20
- Ambient temperature : (-10 - 50) °C 20-50%RH
- Storage temperature : (-40 -70)°C 20-50%RH
- Power supply : 1 section 6F22 9V battery
- Weight : About 150g (including battery and protective cover)
- EC Directive : 2004/108/EEC

**DIGITAL FORCE GAUGE
G-TECH 5Kg/20Kg**



| Specification | Range | Range |
|----------------------|----------------|----------------|
| Model No. | 5Kg | 20Kg |
| Force gauge | 50N | 200N |
| Resolution- | 0.01N | 0.1N |
| - | 0.001Kg | 0.01Kg |
| - | 0.00Lb | 0.0Lb |
| The Sensor | Sensor inside | Sensor inside |
| Accuracy | ± 0.5% | ± 0.5% |
| Power | 3.7V lithium | 3.7V lithium |
| - | battery | battery |
| Continues usage time | | |
| of battery | About 15 Hours | About 15 Hours |
| Battery Life | ≥300 times | ≥300 times |

Charger : Input : AC 220V 50Hz 1000mA,
Output : DC 5V, 1000mA

**ULTRASONIC THICKNESS GAUGE
G-TECH UTM9**



Application

This unit is suitable for measuring materials that are good ultrasonic conductor such as metal, plastic, ceramic, glass etc., as long as the measured part in two parallel surfaces for measurement for measurement of thickness.

* This unit is not suitable for cast iron due to its big crystalloid composition.

Specifications :

- Display : 4 digital LCD display
- Min. Display unit : 0.1mm
- Working frequency : 5MHz
- measuring range : 1.2 to 225.0mm (Steel)
- Min. limit for tube measuring : 20x3 mm (Steel)
- Accuracy : ± (1%H+0.1) mm H denotes the measured thickness
- Sound velocity with a given thickness :
- * Measuring range : 1000 to 9999 m/s
- * When the given thickness over 20mm, the accuracy is ± 1%:
when the given thickness less than 20mm the accuracy is ± 5%

DIGITAL PHASE SEQUENCE METER G-TECH GT 5801



This instrument is used to measure the operating phase condition and order through LED and BUZZER.

Operational Voltage : 200 to 480V (3Phase AC)

Limit Support Voltage : 2000V/minute (Impulse Voltage 4000V)

Measuring Frequency Range : 20 Hz to 400Hz

Time Limit For Continious Measurement :
60 minutes at 200V AC
4 minutes at 480V AC

PEN TYPE VIBRATION METER G-TECH VB 63



Technical parameter

Technical indicators

| | |
|---|--|
| LCD Display | Color display |
| Vibration acquisition | Piezoelectric ceramic accelerometer (shear type) |
| Shuffle interval of data display | 1 Second |
| Measurement range | Acceleration 0.1~199.9m/S ² |
| | Velocity : 0.1~199.9mm/s |
| | Displacement 0.001~1.999mm |
| Frequency range of acceleration measurement | High frequency : 1KHz ~ 4KHz (HI) |
| | Low Frequency : 10Hz ~ 1KHz (LO) |
| Frequency range of speed measurement | 10Hz ~ 1KHz (LO) |
| Frequency range of displacement measurement | 10Hz ~ 1KHz (LO) |
| Maximum groups of data storage | 500 pieces (5 groups x 100 pieces/group) |

VIBRATION METER VB 63B



Function

- Simple to use, the structure is compact, portable for carrying along with measurements
- Visually display measurement value and state
- Acceleration, velocity and displacement measurement
- Different vibration frequency selection
- High sensitivity probe for accurate measurement provides long short probe head, each one is suitable for different situation measurement
- Equipped with AC signal output interface
- Low power indication
- Auto power-off in 60sec (no manual off button)
- LCD backlight
- Provides a magnetic probe to fit the condition uneasy hold on by hand
- Maximum value hold function
- Temperature unit °C/°F selection

SPECIFICATION

| | |
|---|---|
| Measurement range of acceleration | 0.1~199.9m/s ² peak |
| Measurement range of velocity | 0.1~199.9mm/s rms |
| Measurement range of displacement | 0.001~1.999mm p-p Velocity and displacement range is limited by acceleration |
| Measurement accuracy | ±5%±2digits |
| Measurement frequency range of acceleration | 10Hz~1KHz (LO) 1KHz~15KHz (HI) |
| Measurement frequency range of velocity | 10Hz~1KHz (LO) |
| Measurement frequency range of displacement | 10Hz~1KHz (LO) |
| Display update cycle | 1 second |
| LCD display | 3 ½ digits display |
| Static current | <15µA |
| Operating temperature range | 0~40°C |
| Operating humidity range | 30~90%RH |
| Low battery indication | 6.4V±0.2V |

OPTICAL POWER METER GT65



Function

- Battery volume display
- Auto power off (Optional)
- Universal optic interface design
- Light, mini size and low power consumption
- Reading unit switching between absolute power and relative power
- 6 Optic wave length for selection - 850nm/1300nm/1310nm /1490nm/1550nm/1625nm

SPECIFICATION

| | |
|-------------------------------|--|
| Measuring range | -70dBm ~ +6dBm |
| Wave length | 850nm/1300nm/1310nm /1490nm/1550nm/1625nm |
| Resolution | 0.05 |
| Accuracy | ≥48dBm, ±2dBm ≤48dBm, ±dBm |
| Operation environment ≥-48dbm | Temperature : 0~40°C (32°F~104°F) Humidity : 5~95% |
| Operation environment ≤-48dbm | Temperature : 0~32°C (32°F~89.6°F) Humidity : 5~80% |
| Storage environment | Temperature : 0~40°C (32°F~104°F) Humidity : 5~95% |
| Auto power off time | 10 minutes |
| Dimension | 34x114x17.5 mm |
| Power supply | 1.5V AAA x 2 |

WIRE TRACKER METER GT66



FUNCTION

- Long distance wiring tracing
- Internet cable order verifying
- Wiring voltage check
- Wire voltage polarity check
- Wiring shorts inspection
- Low battery indication
- Adjustment for tracing sensitivity / volume
- Earphone jack output
- Flash light

SPECIFICATION

| | |
|------------------------------------|---|
| Testing | 10 Base-T, EIA/TIA 568A, EIA/EIA 568B AT & T 258A, Token-Ring, 2 core and 4 core Telephone cables |
| Usage | Track the cables or wires and Diagnose the break point |
| Signal tracing & Transmit distance | > 1km |
| Display | LED |
| Interface | RJ45 / RJ11 Interface |

AIR QUALITY DETECTOR G-TECH AQ-1063



G-TECH AQ-1063 AIR QUALITY DETECTOR

Possesses the following features:

- Dynamic and real-time detection of PM2.5 and PM10 concentration in the air.
- Environmental temperature and humidity measurement and temperature unit conversion
- Switching between three different display modes.
- Display of the maximum and minimum values.
- Data hold function
- Sound and light alarm settings.
- LCD backlight display of air quality level.

SAFETY WARNINGS

- 0 ug/m³ ~ 75ug/m³ : Air quality is GOOD (green, good)
- 75ug/m³ ~ 150ug/m³ : Air quality level is FAIL (yellow, slightly polluted, unhealthy)
- ≥ 150ug/m³ : Air quality level is BAD (red, heavily polluted, very unhealthy)

THREE DISPLAY MODES

Press the mode button to switch between te three modes

- (1) Mode 1 : Display PM2.5 concentration, Pm10 concentration and ambient temperature
- (2) Mode 2 : Display PM2.5 concentration, Pm10 concentration and ambient humidity
- (3) Mode 3 : Display PM2.5 concentration, concentration, ambient temperature and ambient humidity

| | | | |
|-----------------------|---|----------------------------------|---------------------|
| Detected gas | Particulate concentrations in the air (PM2.5, Pm10) | | |
| Measuring range | (0~5000ug/m ³) | Minimum reading | 1 ug/m ³ |
| Resolution ratio | 1 ug/m ³ | Minimum resolution particle size | 0.3um |
| Response time | ≤10s | | |
| Measurement principle | Laser diffusion principle | | |
| Working environment | 0~50°C, 32~122°F; 10~90%RH | | |
| Storage environment | -10~80°C, -14~176°F; 10~75%RH | | |
| Power supply | 3x1.2V AA rechargeable NiMH or 5V 1A power adapter | | |
| Dimension | 91.5x64.8x135mm | | |
| Weight | 152g (excluding of battery) | | |

AIR QUALITY DETECTOR G-TECH AQ-1064



G-TECH AQ-1064 AIR QUALITY DETECTOR

It is a high-performance home air quality detector, mainly used to monitor PM2.5, HCHO, TVOC, Co2 gas concentrations and temperature and humidity.

The instrument adopts high-precision laser dust sensor, electrochemical HCHO sensor, semiconductor air quality sensor and temperature and humidity sensor, which has the characteristics of true and reliable measurement data and stable performance.

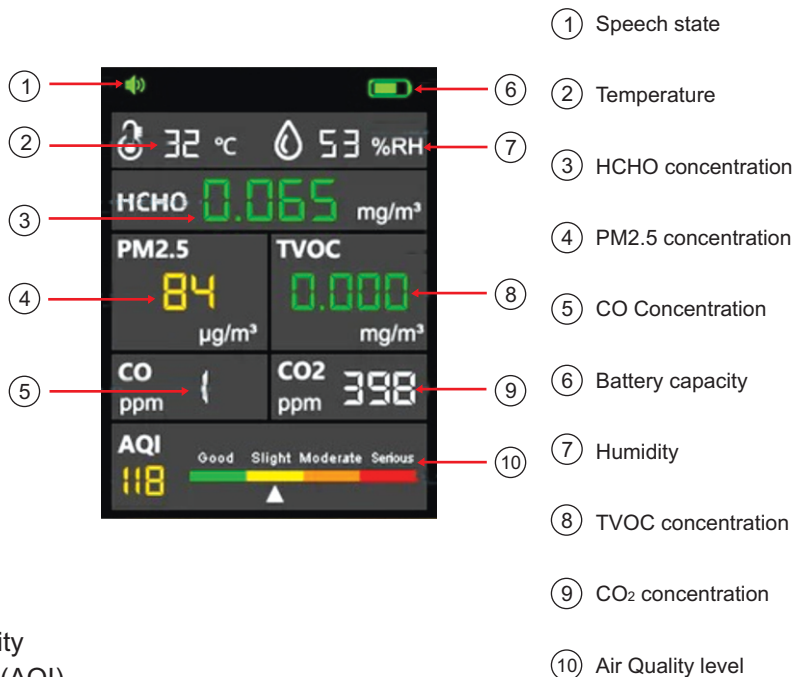
The instrument is equipped with a 3.2-inch color LCD display and can be viewed through the history interface.

- ① With live - person voice prompt and alarm function
- ② One-click on / off voice function for convenient operation
- ③ Built-in memory, recording data for the last 8 hours and viewing through the interface
- ④ Free switching between chinese and english
- ⑤ Battery power is continuously monitored, and with a low power reminder function
- ⑥ Data evaluation Indoor Air Quality Standards



Indoor Air Quality Standards

| Parameters | Unit | Standard Values | Remark |
|------------|-------------------|-----------------|-----------------|
| HCHO | mg/m ³ | 0.10 | 1-hour average |
| TVOC | mg/m ³ | 0.60 | 8-hours average |
| PM2.5 | µg/m ³ | <35 | Excellent |
| | | 35~115 | Good |
| | | 115~150 | Normal |
| | | >150 | Bad |



Note : According to GB/T18883-2002 Indoor Air Quality Standard and HJ633-2012 Ambient Air Quality Index (AQI) Technical Regulation (Trial)

PRESSURE MANOMETER G-TECH PM-520 WITH USB



There are following 11 selectable pressure units: bar, mbar, kPa, kgf/cm², mmHg, cmH₂O, Oznf/in², psie, inHg, inH₂O, ftH₂O. This unit features data save and adjustment, automatic turn-off, connecting with PC to read and export the data with a USB wire.

Pressure Manometer possesses the following features:

1. Large LCD
2. Data hold
3. With differential mode and record mode
4. USB port
5. Reset; and data adjustment
6. Low battery indication and automatic power off

G-TECH PM-520 COMES WITH BELOW ACCESSORIES:

- 1.5V AAA battery x 4
- Operation manual : 1
- USB wire : 1
- CD : 1
- Translucent silica gel hose : 2
- Transparent PVC hose : 2

| | |
|--------------------------|-------------------------|
| Measuring range | ±35kPa |
| Accuracy | ±0.3%FSO(25°C) |
| Repeatability | ±0.2%(Maximum+/-0.5FSO) |
| Linearity / hysteresis | ±0.29FSO |
| Response | Typical 0.5s |
| Low battery indication | Yes |
| Up overload indication | Err1 |
| Down overload indication | Err2 |
| Operating temperature | 0~50°C |
| Storage temperature | -10~60°C |
| Power supply | 1.5V AAA battery x 4 |
| USB communication | Yes |

| Unit | Range | Resolution | Maximum |
|------------------------|-------|------------|---------|
| bar, | 0.35 | 0.001 | 1.5 |
| mbar, | 350 | 0.1 | 1500 |
| kPa, | 35 | 0.01 | 150 |
| kgf/cm ² , | 0.356 | 0.001 | 1.529 |
| mmHg, | 262.5 | 0.1 | 1125 |
| cmH ₂ O, | 356.6 | 0.1 | 1528.5 |
| Ozmf/in ² , | 81.2 | 0.01 | 348 |
| psie, | 5.076 | 0.001 | 21.755 |
| inHg, | 10.33 | 0.01 | 44.29 |
| inH ₂ O, | 140.3 | 0.1 | 601.5 |
| ftH ₂ O | 11.69 | 0.01 | 50.1 |

**VEHICLE BATTERY SYSTEM METER G-TECH BT31
VEHICLE BATTERY SYSTEM METER WITH PRINTER G-TECH BT31P**



12V/24V Car Battery
CCA : 100-1700
Voltage range :9V-35V
Battery capacitance : 30-200AH



12V Battery, Print function
CCA : 100-1700
Voltage range : 9V-18V
Battery capacitance : 30-200AH

Features

- Key parameters Measured for Diagnosis of Vehicle Battery & Electrical System
- Display of Battery condition (Good / OK / Pay Attention / Replace)
- Overload Protection to ensure Operator Safety
- Loose Lea Detection - Reverse Polarity Protection
- Internal Unit Conversion CCA / IEC / EN / DIN
- Battery Recharge Indicator, Detects and Display Bad Cell, Overload Protection of input Voltage

| Product Name | G-TECH BT31 | G-TECH BT31P |
|----------------------------|---|-------------------------|
| Applicable Battery | 12V/24V Storage Battery | 12V/24V Storage Battery |
| Print or not | No | Yes |
| CCA range | 100~1700 | 100~1700 |
| Operating Temperature | -18°C ~ 50°C | -18°C ~ 50°C |
| Voltage Range | 9 ~ 35V | 9 ~ 18V |
| Battery Range | 30AH - 200AH | 30AH - 200AH |
| Testing method | Kelvin four-terminal sensing | |
| Battery selection criteria | CCA : 100~1700 IEC : 100~1000 EN : 100~1700 DIN : 100~1000 | |
| Main function | Battery starting test, engine system start load test, huge load system test, charging system test etc. | |
| Notes | This battery tester is only used for car battery testing measuring voltage range is 12V (12V~24V) Measuring CCA range is 100~1700 | |
| | Battery range is 30 AH-200AH Warning : the below cars of batteries are not allowed to test : electric vehicle, UPS batteries, electric tricycle | |

**DIGITAL BATTERY LOAD METER
G-TECH BT30**



| Specifications | Range |
|--|----------------------------|
| Battery Type | Lead Acid & Li-ion Battery |
| Battery Voltage | 6V / 12V DC |
| Battery Capacity | 40 Ah ~ 200Ah |
| Battery Load Test Current | 80A |
| Load Test Time Control Timer | <10 seconds |
| Battery Drop Voltage in Load Test | √ |
| Temperature control in Load Test | √ |
| Battery Internal Resistance by Load Test | 0 ~ 99mΩ. |
| Battery Internal Resistance by : 4 - Wires Test | 0 ~ 99mΩ |
| Battery conclusion by Load Test or by 4 - Wires Test | Good / Weak / BAD |
| Reverse Polarity Protection | √ |
| Detects and Display Bad cell | √ |
| Missing Lead Detection | √ |
| Overload Protection of Input Voltage | √ |

SPECIFICATION AND PARAMETERS

1. Maximum voltage: DC 19.99V
2. Internal resistance range of battery : 1.00milliohm ~ 99.99milliohm
3. LED status indication : Battery condition "Green" (Sufficient Capacity), "Yellow" (Insufficient Capacity), "Red" (Replace battery), Charging system : "Green" (Normal Charging), "Yellow" (Abnormal Changing)
4. Accumulator capacity presetting : continuously adjustable in the range of 40-200Ah, with 5Ah increment.
5. Test time : less than 10s : test time interval : it is suggested as about 5min.
6. Poor contact prompt for test clamp : reverse clamp connection protection : input over voltage protection.

BATTERY INTERNAL RESISTANCE TESTER GT32 + USB



Function

- Used to measure the internal resistance, voltage and temperature of lead-acid batteries lithium batteries and other batteries
- Internal resistance range : 0.000mΩ~3.100Ω
- Voltage range : 0.000V~±71.00V
- Temperature measurement : -10°C ~ 60.0°C
- AC injection method measurement
- Large -capacity lithium battery charging
- With USB interface, upload to computer
- With Bluetooth function, can connect to mobile phones
- Pre-set PASS, WARNING, FAIL judgement thresholds

PRODUCT INTRODUCTION

General rechargeable battery internal resistance tester Abbreviation: battery internal resistance tester. it is a measuring instrument used to measure the internal resistance, voltage and temperature of rechargeable batteries such as lead storage batteries and lithium batteries to determine the health of the battery. It can also be used as meter to measure the ESR parameters of electrolytic capacitors (for reference only), This meter uses the AC 4-terminal test method to measure the internal resistance of the battery, and can measure the correct measurement value without being affected by the contact resistance between the test wire, terminal and battery electrode. It also has functions such as data storage, data access, alarm and automatic shutdown. The whole machine is hi-grade and beautiful, with side measuring range, high resolution, convenient operation, easy to carry, accurate, reliable stable performance and strong anti-interference ability. It is an indispensable instrument for battery production, battery installation, equipment production, equipment maintenance and other scenarios

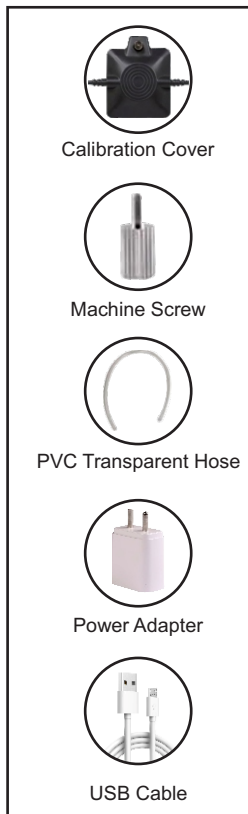
TECHNICAL PARAMETERS

| | |
|--|---|
| Function | Battery internal resistance measurement, battery voltage measurement, temperature measurement |
| Accuracy guaranteed temperature and humidity | 23°C ~±5°C, Below 75% RH |
| Power supply | DC 3.7V lithium battery |
| Measuring range | Internal resistance measurement :0.000mΩ~3.100Ω (4 ranges configuration) resolution : 1uΩ Voltage range : 0.000V~±71.00V (consisting of 2 ranges) resolution : 1mV Temperature measurement: -10°C~60.0°C (single range configuration) resolution 0.1°C DC 70V (between + measurement terminal and-measurement terminal), no AC input |
| Maximum input voltage | Internal resistance measurement : 1KHz AC 4-terminal test method, |
| Measurement method | open-circuit terminal voltage 3V max Measuring current : 2.0mA~200mA (different measuring current in different ranges) Temperature measurement: NTC temperature sensor (10KΩ at 26°C) A/D conversion method: successive approximation type Display update frequency : 5 times /second |
| Response time | 200ms |
| Measure time | About 2 seconds |
| LCD size | 70.1mm x 52.6mm /3.5 inches (320x240 resolution 16-bit true color screen |
| Instrument size | 190mm x 121mm x 51mm |
| USB interface | With a USB interface, the stored data can be uploaded to the computer, saved and printed |
| Bluetooth connection | Yes |
| Hold and store function | Manual retention and storage, automatic retention and storage |
| Measurement judgement function | Pre-set PASS, WARNING, FAIL judgement thresholds |
| Battery voltage | The battery level is displayed in 5 bars, reminding to charge in time when the battery voltage is low |
| Automatic shut-down | No operation when power on, it will power off automatically after about 15 minutes (can be turned off in the setting) |
| Power consumption | 30mA MIN / 500mA MAX |
| Weight | Meter : 480g (with battery) |

OXYGEN MONITOR
G-TECH GT1000/GT2000



G-TECH GT2000



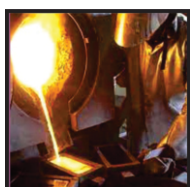
G-TECH GT1000

Oxygen monitor adopts high quality gas sensors, which display safety and reliability with accurate measurement and stable performance. It has excellent sensitivity and repeatability, easy to use and maintain, and meets the requirements by safety monitoring in industrial site for high reliability of the equipment. The shell is made of high strength engineering plastics and compound nonslip rubber, dust and explosion proof, with high strength and smooth handfeel.

| Function | GT2000 | GT1000 |
|---|--------|--------|
| Colour screen display | ✓ | ☒ |
| Three alarm forms (sound/light/vibration) | ✓ | ☒ |
| Data recording (up to 120,000data) | ✓ | ☒ |
| Data playback | ✓ | ☒ |
| Data retention | ☒ | ✓ |
| Charging function | ✓ | ☒ |
| Maximum/minimum display | ✓ | ✓ |
| °C/°F unit switch | ✓ | ✓ |
| Shut down regularly (within 10Min) | ✓ | ✓ |
| Calibration function | ✓ | ✓ |
| High and low temperature alarm settings | ✓ | ✓ |
| Battery reminder | ✓ | ✓ |
| Automatic shutdown | ✓ | ☒ |
| Backlit screen | ✓ | ✓ |

| Specification | GT2000 | GT1000 |
|---------------------|----------------------|-----------------------|
| Measuring range | 0~30% VOL | 0~25% VOL |
| Response time (90%) | Less than 30 seconds | Less than 15 seconds |
| Power supply | LP103450-1800mAh | 3x1.5V AAA batteries |
| Weight | 215.4g | 111.9g |
| Dimensions | 71x153x49mm | 67.98x28.47x119.98 mm |

Application



Metallurgical Refining



Biochemical Medicine



Agricultural Research



Petrochemical

**CARBON MONOXIDE MONITOR
G-TECH GT3000**



Carbon Monoxide monitor adopts high quality gas sensors, which displays safety and reliability with accurate measurement and stable performance. It has excellent sensitivity and repeatability, easy to use and maintain, and meets the requirements by safety monitoring in industrial site for high reliability of the equipment. The shell is made of high strength engineering plastics and compound nonslip rubber, dust and explosion proof, with high strength and smooth hand feel.

Features

- ✓ Data retention ✓ Maximum/minimum display
- ✓ °C/°F unit switch ✓ Shut down regularly (within 10Min)
- ✓ Calibration function ✓ High and low temperature alarm settings
- ✓ Battery reminder ✓ Automatic shutdown ✓ Backlit screen
- ✓ Unit conversion (%VOL, % LEL, PPM, (mg/M))

Specification

| | |
|-----------------|--|
| Measuring range | 0~1000ppm 0~0.1%VOL 0~0.8%LEL 0~1250mg/M3 |
| Response time | Less than 30seconds |
| Power supply | 3x1.5V AAA batteries |
| Dimensions | 67.98x28.47x119.98 mm |
| Weight | 111.9g |

**HYDROGEN SULFIDE DETECTOR
G-TECH GT 5000**



Hydrogen sulfide (H₂S) detector is novel-looking, compact and portable, which is designed for detecting hydrogen sulfide concentration. It uses high quality gas sensor to achieve accurate measurement, stable performance with safety and reliability.

It meets stability requirement of industrial site safety. Monitoring on equipments's high reliability, widely used in household, chemical industry, mining industry, environmental protection, gas transmission and distribution, biochemical medicine, agricultural research and so on

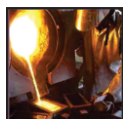
Features

- **HOLD** data holding • **MAX** maximum value / **MIN** minimum
- **UNIT** switch units among %VOL, %LEL, PPM (mg/m³)
- Alarm setting • Calibration • On/Off (Timed shutdown)

Specification

| | |
|---------------------------------------|--|
| Measurement range of hydrogen sulfide | 0~100PPM 0~0.01VOL% 30~152mg/M 0~0.23LEL% |
| Maximum overload | 500PPM |
| Response time | <30s |
| Sensor type | Electrochemical H ₂ S sensor |
| Power Supply | 3x1.5 AAA batteries |
| Weight | 111.9g (without battery) |
| Dimension | 67.98 x 28.47 x 119.98mm |

Application For : GT 3000/GT 5000



Metallurgical Refining



Biochemical Medicine



Agricultural Research



Petrochemical

CARBON DIOXIDE MONITOR
G-TECH GT 4000



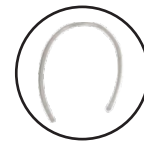
Calibration Cover



Power Adapter



USB Cable



PVC Transparent Hose

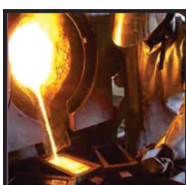
Carbon Dioxide Monitor adopts high-quality gas sensors, which display safety and reliability with accurate measurement and stable performance. It has excellent sensitivity and repeatability easy to use and maintain, and meets the requirements by safety monitoring in industrial site for high reliability pf the equipment. The shell is made of high-strength engineering plastics and compound non slip rubber, dust and explosion-proof with high strength and smooth hand feel.

Function

- Colour-screen display, user-friendly interface.
- Two alarm forms : sound / light
- Data recording and review function, continuously record 7605 data.
- Charging function.

| Specification | |
|------------------------|--|
| Gas detection | Co ₂ |
| Measuring range | 0~10000μmol/mol |
| Resolution | 1 |
| Accuracy | ±40μmol/mol±3% |
| Response time (90%) | About 2 minutes |
| Indication Mode | LCD displays real-time data and system state, LED and sound indication alarm |
| Low battery indication | Temperature : -10~55°C; Humidity: <85%/RH non-condensing |
| Power supply | DC 3.7V (Lithium battery capacity 1800mAH) |
| Working voltage | Temperature : 0~50°C Humidity : <85%RH non-condensing |
| Battery model | LP1034150-1800mAh |
| Charging time | About 4 hours |
| Standby time | More than 8h on end (slightly change with working state) |
| Dimension | 71x153x49 mm |
| Weight | 215.4g (with battery and back button) |

Application



Metallurgical Refining



Biochemical Medicine

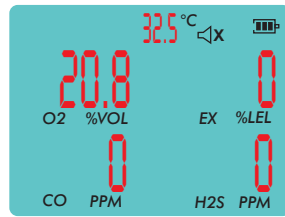


Agricultural Research



Petrochemical

**PORTABLE MULTI-GAS DETECTOR
G-TECH GT6000**



Application

H₂S **CO** **O₂** **LEL**

Petrochemical **Biochemical Medicine**

Agricultural Research **Metallurgical Refining**

Compound Gas Monitor adopts high-Quality gas sensors, which display safety and reliability with accurate measurement and stable performance, it has excellent sensitivity and repeatability, easy to use and maintain and meets the requirements by safety monitoring in industrial site for high reliability of the equipment,

Features :

- Simultaneous detection of four gases (O₂, Co, H₂ S, LEL)
- There are three alarm forms : sound, light and vibration
- Data logging
- Charging function
- High and low value alarm
- °C\°F temperature unit conversion
- Automatic shutdown
- Battery display
- Calibrate the zero point
- Temperature compensation
- Data retention
- Maximum and minimum measurement

| Specification | | | |
|-----------------------------------|---|--------|------------|
| Compound Gas Monitor range | | | |
| Measuring item | Unit | Range | Resolution |
| Combustible gas LEL | %LEL | 0~100 | 0.1 |
| Oxygen O ₂ | %VOL | 0~30 | 0.1 |
| Hydrogen sulfide H ₂ S | μmol/mol | 0~100 | 0.1 |
| Carbon monoxide CO | μmol/mol | 0~1000 | 1 |
| Accuracy | ≤ ±5%FS | | |
| Response time (90%) | Less than 30 seconds | | |
| Indication mode | LCD display real-time data and system state, LED, sound, vibration indication alarm | | |
| Storage Conditions | Temperature : 10~55°C Humidity<85%RH | | |
| Operation conditions | Temperature : 20~50°C Humidity : < 95%RH non-condensing | | |
| Working voltage | DC 3.7V (Lithium battery capacity 1800mAH) | | |
| Charging time | 4 Hour | | |
| Standby time | More than 8H on end (slightly change with working state) | | |
| Dimension | 71 x 53 x 49 mm | | |
| Weight | 218.7 g With battery | | |

COMBUSTIBLE GAS DETECTOR G-TECH GT 7000



Combustible gas detector possesses the

1. High sensitivity
2. Quick find the resource of leakage
3. Indicating the leakage via alarming bulb
4. High precision sensor able to detect slight gas leakage
5. Quick response
6. Monophony earphone socket
7. 16-inch long goose neck

Features

- Response time : 2 seconds
- Warm-up time : 60seconds approx (25°C, 60%RH) environment
- continuous operating time : 8 hours (Varying with operating status)
- Low battery indication : $3\pm 0.2V$
- Operating environment temperature : 0~50°C
- Detectable control
- Sensor reset
- Power & Alarm LED indication

Specification

The Following list only shows
Partial gases can be detectable (Types of gases) :

| | |
|---------------|----------------------|
| • Natural gas | • CO |
| • Propane | • Gasoline |
| • Butane | • Spraying fuel |
| • Methane | • Sulfurated |
| • Propanol | • Smoke |
| • Ethanol | • Industrial solvent |
| • Ammonia | • Paint |
| • Steam | • Naphtha |

**PORTABLE SINGLE GAS DETECTOR
G-TECH GT 8000**

TECHNICAL PARAMETERS

| | | | |
|------------------------------|-----------------------|--------------------------------|-----------------------|
| Alarm Method: | Sound/Light/Vibration | | |
| Response Time: | T90<60s | Display : | 1.77 inch LCD display |
| Charging Time: | 4~6 hours | Explosion Proof level : | Ip65 |
| Working Time: | < 10 hours | Product Size: | 109x60x30mm |
| Working environment : | -10°C~55°C, <95%RH | Weight: | |



Available Single Gas Option

| Gas Detected | Range | Low Alarm | High Alarm |
|----------------------------|-------------|-----------|------------|
| Methane | 0-100%LEL | 20%LEL | 50%LEL |
| Propane | 0-100%LEL | 20%LEL | 50%LEL |
| Hydrogen | 0-100%LEL | 20%LEL | 50%LEL |
| Hydrogen | 0-1000ppm | 35ppm | 250ppm |
| Ethylene Oxide | 0-100ppm | 10ppm | 15ppm |
| Ethylene | 0-100%LEL | 20%LEL | 50%LEL |
| Ethylene | 0-20ppm | 5ppm | 10ppm |
| Ethylene Alcolol | 0-100%LEL | 20%LEL | 50%LEL |
| Ammonia | 0-100ppm | 25ppm | 50ppm |
| Chlorine | 0-50ppm | 5ppm | 10ppm |
| Ozone | 0-20ppm | 5ppm | 10ppm |
| Sulfur Dioxide | 0-100ppm | 2ppm | 5ppm |
| Phosphane | 0-20ppm | 0.3ppm | 5ppm |
| Oxide Nitrogen | 0-250ppm | 20ppm | 50ppm |
| Nitrogen Dioxide | 0-20ppm | 5ppm | 10ppm |
| Nitrogen | 70%-100%vol | 76%vol | 82%vol |
| Hydrogen Cyanide | 0-50ppm | 10ppm | 20ppm |
| Hydrogen Chloride | 0-50ppm | 10ppm | 10ppm |
| Volatile Organic Compounds | 0-100ppm | 20ppm | 50ppm |
| Volatile Organic Compounds | 0-1000ppm | 50ppm | 200ppm |
| Explosive Gases | 0-100% | 20% | 50% |

PORTABLE GAS SAMPLING PUMP



INTRODUCTION

The G-TECH Gas Sampling Pump with advantages of simple & beautiful design, easy installation, small size light weight, low noise and good stability

FEATURES :

- Anti shaking & Anti-striking
- Attractive design & easy operation
- Pump jam alarm
- Low power & voltage alarm
- Rechargeable

Technical Data :

- Rated voltage : DC 3.0V
- Voltage range : DC 2.0V~Dc 3.2V
- Rated current : <400mA
- Max. pressure : >300mm Hg
- Pump time : <60s
- Working flow : < LPM
- Life span : 200 hrs (working continuously)
- Diameter : 3.2mm
- Housing material : ABS
- Pressure : <3mm Hg
- Dimension : 65x30x225 mm
- Weight : 140gms
- Power : 3.7V Rechargeable lithium battery
- Charging time : Less than 5 Hours

Accessories :

Sampling probe, Gas output tube, Charger, User manual

**mV, THERMO COUPLE & RTD
SOURCE CALIBRATOR G-TECH 01⁺**



This Calibrator is a source for Volts, Ohms RTD & Thermocouples. It gives output of Volts in 2 ranges 100mV & 1000mV & also gives output of ohms in 2 ranges 400Ω & 4000Ω & output for calibrating R, S, B, E, K, J, T & N type thermocouples. It also gives output for RTD Pt100 & Cu50. It has very high accuracy 0.05%

- * Display : 5 digit LCD display
- * Basic Accuracy : ± 0.05%
- * Functions
- * DC Voltage range : 100mV ~ 1V
Resolution 0.01mV
- * Ohms range : 400Ω & 4000Ω
Resolution 0.1Ω
- Thermocouple : R, S, B, E, K, J, T & N, A & C, D
- * Thermo - Resistance :
Pt100, Pt200, Pt500, Pt1000 & Cu50
30V between terminal & Earth ground
- * SAFETY
- * Complies with IEC1010
- * Additional Functions :
- * Power Consumption : about 70m / 3V
- * Power supply : 1.5V x 2 Alkaline batteries.
- * Accessories : User manual, Test lead CF-36 (Clips for probe), Holster & Carrying case

**RTD CALIBRATOR SOURCE & SINK
G-TECH 03⁺**



- * Display : Large 4 digit LCD display
- Basic accuracy : ± 0.05%
- * FUNCTIONS :
- * OUTPUT FUNCTION :
- * Stimulate resistance ohm range : 500Ω & 5000Ω
- * Output range : 0.0~500Ω / 5000Ω
- * Accuracy : ± 0.05% ± 2
- * Thermal resistance RTD : Cu50
- * Output range : -50°C ~ 150.0°C
- * Thermal resistance RTD : Pt10 / Pt1000
- * Output range : -200°C ~ 500°C
- * Accuracy : ± 0.05% + 6
- * INPUT FUNCTION :
- * Resistance Ohm range : 500Ω & 5000Ω
- * Input range : 0.0~500Ω / 5000Ω
- * Accuracy : ± 0.05% ± 2
- * Thermal resistance RTD : Cu50
- * Input range : -50°C ~ 150°C
- * Thermal resistance RTD : Pt10 / Pt1000
- * Input range : -200°C ~ 850°C
- * Accuracy : ± 0.05% + 0.6°C
- * Maximum allowable voltage : 30V
- * SAFETY :
- * Complies with IEC1010
- * ADDITIONAL FUNCTIONS :
- * Power consumption : about 70m / 3V
- * Power supply : 1.5V x 2 Alkaline batteries
- * Accessories : User manual, Test lead CF-36 (Clips for probe), Holster & Carrying case

**VOLTAGE / mA CALIBRATOR
SOURCE (DCV, DCA) G-TECH 04⁺**



The G-TECH make Volt & milliampere calibrator is a high accuracy (0.05%) calibrator. It has 5 digit LCD display with high stability. it can be used for calibrating transmitters, thermocouples, SCADA systems, transducers, it also provides loop circuit power 24V.

The max. load is 1kΩ at 20mA range when the power is higher than 6.8V, The Max. load is 700Ω at 20mA range when the power is within 5.8V - 6.8V, Temperature coefficient ± 0.005% range / °C (5°C-18°C, 28°C-40°C)

* Display : Large 5 digit LCD display

* Basic accuracy : ± 0.05%

FUNCTIONS :

* DC voltage : 0.000 ~ 11000V

* Accuracy : ± 0.05% + 2

* DC current : 0.000 ~ 22.000mA

* Accuracy : ± 0.05% + 4μA

* Simulate transmitter (sinking current) :

* 0.000 ~ 22.000mA

* Accuracy : ± 0.05% + 4μA

* Loop power : 24V

* Accuracy : ± 10%

* Max. allowable voltage : 30V

* Max. output current 25mA

* SAFETY : Complies with IEC1010

ADDITIONAL FUNCTIONS :

* Power consumption : about 400mA / 3V in condition of 1kΩ load & 20mA output.

* Power supply : 1.5V x 2 Alkaline batteries.

* Accessories : User manual, Test lead CF-36 (Clips for probe), Holster & Carrying case

**LOOP CALIBRATOR, SOURCE/
SINK (DCA, DCV) G-TECH 05⁺**



* Display : Large 4 digit LCD display

* Basic accuracy : ± 0.05%

*** FUNCTIONS :**

*** OUTPUT FUNCTION :**

* DC current : 0.000 ~ 22.000mA

* Accuracy : ± 0.05% + 4μA

* Simu- transmitter (absorption current) :

* 0.000 ~ 22.000mA

* Accuracy : ± 0.05% + 4μA

* Loop power : 24V

* Accuracy : ± 0.05% set value + 4μA

*** INPUT FUNCTION :**

* DC voltage range : -0.200 ~ 28.000V

* DC current : -1.000 ~ 22.000mA

* Accuracy : ± 0.02% reading ± 4μA

* Loop current : 0.000 ~ 22.000mA

* Max. output current : 25mA

* SAFETY : Complies with IEC1010

* Power supply : 1.5V x 2 Alkaline batteries.

* Accessories : User manual, Test lead CF-36 (Clips for probe), Holster & Carrying case

PROCESS SIGNAL SOURCE
G-TECH 11⁺



GENERAL SPECIFICATION

- High Accuracy of 0.02% for source, 6 digits display for source.
- Source: DC Voltage, DC current, resistance, simulating transmitted temperature (thermocouple/resistance temperature detector), frequency, pulse, contact
- Provides 25% step or 100% step DC current output manually or automatically.
- TC source terminals and built-in lead connector of same temperature (RJ compensation with auto - reference joint point): the unit can be converted between °C and °F.
- Outside place temperature detector with high accuracy of ±2°C.
- Big LCD can display the TC/RTD value and voltage/resistance value, mA value and mA% value corresponding simultaneously.
- Carefully designed key layout, each pair of increase/decrease key correspond with the set value on the LCD.
- It can be calibrated without open the cover of the calibrator.
- White LED backlight with auto turn off and auto turn off the power, it is suitable for use on locale.

TECHNICAL SPECIFICATIONS

- These specification assume • A 1-year calibration cycle
- An operating temperature of 18°C to 28°C (64.4°F ~82.4°F)
 - Relative humidity of 35% to 70% (non condensing)
- Accuracy is expressed as ± (percentage of reading + percentage of range).



Output pulse



Output/measure current



Output/measure frequency



Digital Display



Thermal resistance



Thermocouple



Large screen Display



Output / measure resistance

Analog Transmitter High precision measurement

| Function | Reference | Range | Resolution | Accuracy | Remarks |
|------------|-----------|--------------------|------------|--|--|
| DC Voltage | 100mV | -10.000~110.000mV | 1μV | 0.02+0.01 | Maximum output : 0.5mA |
| | 1000V | - 100.00~1100.00mV | 10μV | 0.02+0.01 | Maximum output : 2mA |
| | 10V | -10000~11.0000V | 0.1mV | 0.02+0.01 | Maximum output : 5mA |
| DC Current | 20mA | 0.000mA~22.000mA | 1μA | 0.02+0.02 | Simulator transmitter: 5-28V power supply outside :1KΩ at 20mA |
| Resistance | 400Ω | 0.00Ω~400.00Ω | 0.01Ω | 0.02+0.02 | Excitation current : ±0.5-3mA; if ±0,1-0.5mA,add 0.1Ω; |
| | 4KΩ | 0.0000KΩ~4.0000KΩ | 0.1Ω | 0.05+0.025 | Does not include lead resistance Excitation current : ±0.0/mA |
| | 40KΩ | 0.000KΩ~40.000KΩ | 1Ω | 0.1+0.1 | Does not include lead resistance Excitation current : ±0.01/mA Does not include lead resistance |
| TC | R | 0°C~1767°C | 1°C | 0~100°C: 1.5°C 100~1767°C:1.2°C | By using ITS-90 temperature scale; the accuracy does not include the error of internal temperature compensation caused by sensor |
| | S | 0°C~1767°C | | 0~100°C: 1.5°C 100~1767°C:1.2°C | |
| | K | -200.0°C~1372.0°C | 0.1°C | -200.0~100.0 : 0.6C -100~400.0 : 0.5°C 400.0~1200.0°C : 0.7°C 1200.0~1372.0 : 0.9°C | |
| | E | -200.0°C~1000.0°C | | -200.0~100.0 : 0.6C -100~600.0 : 0.5°C 600.0~1000.0°C : 0.4°C | |

Specification continued next page.....

**PROCESS SIGNAL SOURCE
G-TECH 11⁺**

Specification 11⁺ (Page 2)

| Function | Reference | Range | Resolution | Accuracy | Remarks |
|-----------|----------------|-------------------|------------|--|---|
| TC | J | -200.0~1200.0°C | | -200.0~100.0 : 0.6°C -100~400.0 : 0.5°C 800.0~1200.0°C : 0.7°C | |
| | T | -250.0~400.0°C | | -250~400.0°C : 0.6°C | |
| | N | -200.0~1300.0°C | | -200.0~100.0°C : 1.0°C -100~900.0°C : 0.7°C 900.0~1300.0°C : 0.8°C | |
| | B | 600°C~1820°C | 1°C | 600.0~800°C : 1.5°C 800.0~1820°C : 1.1°C | |
| | L | -200°C~900.0°C | 0.1°C | -200.0~0.0°C : 0.7°C 0.0~900°C : 0.5°C | |
| | U | -200°C~600.0°C | 0.1°C | -200.0~0.0°C : 0.7°C 0.0~600°C : 0.5°C | |
| RTD | Pt 100 385 | -200°C~800.0°C | 0.1°C | -200.0~0.0°C : 0.3°C 0.0~400.0°C : 0.5°C 400~800.0°C : 0.8°C | By using ITS-90 Excitation current : ±0.5~±3mA for Pt 100, Cu 10, Cu50 and add 0.5°C when excitation current is ± 0.1mA-0.5mA Excitation current : ± 0.05mA~±0.3mA for Pt200, Pt500, Pt1000 Does not include lead resistance |
| | Pt 200 385 | -200°C~630.0°C | | -200.0~100.0°C : 0.8°C 100.0~300.0°C : 0.9°C 300.0~630.0°C : 1.0°C | |
| | Pt 500 385 | -200°C~630.0°C | | -200.0~100.0°C : 0.4°C 100.0~300.0°C : 0.5°C 300.0~630.0°C : 0.7°C | |
| | Pt 1000 385 | -200°C~630.0°C | | -200.0~100.0°C : 0.2°C 100.0~300.0°C : 0.5°C 300.0~630.0°C : 0.7°C | |
| | Cu10 | -100°C~260.0°C | | 1.8°C | |
| | Cu50 | -50°C~150.0°C | | 0.6°C | |
| Frequency | 100Hz | 1.00Hz~110.00Hz | 0.01Hz | ±2 Count | Output voltage :+1 ±11V (zero base waveform): Amplitude accuracy : ± 5% reading value +0.5V : Maximum load : > 100KΩ Duty Cycle : 50% |
| | 1KHz | 0.100KHz~1.100KHz | 1Hz | | |
| | 10KHz | 1.0KHz~11.0KHz | 0.1KHz | | |
| | 100KHz | 10KHz~110KHz | 2KHz | ±5 Count | |
| Pulse | 100Hz | 1~100000 cycles | 1 cyc | ±2 Count | |
| | 1KHz | | | | |
| | 10KHz | | | | |
| Switch | 100Hz | 1.00Hz~110.00Hz | 0.01Hz | ±2 Count | Contact output (with 0.0V amplitude setting, FET switch ON/OFF) Maximum Open/Close Voltage/Current : + 28V/50mA |
| | 1KHz | 0.100KHz~1.100KHz | 1Hz | | |
| | 10KHz | 1.0KHz~11.0KHz | 0.1KHz | | |
| | 100Hz | 10KHz~110KHz | 2KHz | ±5 Count | |

Other Feature

- Temperature Coefficient : 0.1 times the applicable accuracy specification per degree C for 5°C to 18°C and 28°C to 50°C
- The range of the internal temperature compensation sensor is from 0°C to 40°C , Compensation error <0.5°C.
The accuracy of the temperature probe : ±0.2°C, The range of the measurement temperature is from -20°C -100°C.
- Maximum voltage between any output terminal and earth 30Vp-p
- Maximum output current : Approximately 25mA

General Specification

- Operating temperature and humidity <80% at 0°C to 50°C (non-condensing)
<70% at 40°C
- Storage temperature and humidity <90% at -25°C to 60°C (non-condensing)
- Display and backlight - A dual, Liquid Crystal Display, White LED for backlight
- Power supply 4 x 1.5AA Size alkaline batteries
- Automatic power off : it's allowed set the Automatic power - off from 0 to 60min.
- size : 245x95x42 (mm)
- Weight : About 500g
- Accessories, Test leads, Fuse

**TEMPERATURE CALIBRATOR
(DCV, OHMS, TC, RTD) (Source/Sink) G-TECH 14⁺**



- * Display : A dual, liquid crystal LED backlight display
5 digit for measure & 6 digits display for source.

FUNCTIONS :

- * DC voltage : 5,000V ~ 550.0mV
- * Resistance : 0.01Ω ~ 5.5000KΩ
- * Thermocouple : R, S, K, E, J, T, N, B, L, U.
- * Thermo resistance : Pt 100 385 / Pt 1000 385/
Pt 200 385 / Pt 500 385 / Cu 10 / 500Ω

OUTPUT FUNCTION :

- * DC Voltage : -10.000mA ~ 1100.00mV
- * Resistance : 0.01Ω ~ 4.0000KΩ
- * Thermocouple : R, S, K, E, J, T, N, B, L, U.
- * Thermo resistance : Pt 100 385 / Pt 1000 385/
Pt 200 385 / Pt 500 385 / Cu 10 / 500Ω
- * Measured resistance & measured temperature
2, 3, 4 wire

* SAFETY : Complies with IEC1010

ADDITIONAL FUNCTIONS :

- * High accuracy of 0.02% for measure & source
6 digit for generated value
- * Max. allowable voltage : 30V
- * Power supply : 1.5V x 4 Alkaline batteries.
- * Accessories : Test leads, User manual, Holster
Carrying case
- * Optional Accessories : AC adaptor (VCPS)

**V/mA PROCESS CALIBRATOR
(DCV, DCA, PRESSURE, HZ, PULSE, LOOP) (Source/Sink) G-TECH 15⁺**



- * Display : A dual, liquid crystal LED backlight display
5 digit for measure & 6 digits display for source.

FUNCTIONS :

- * DC voltage : 1,000V ~ 1100mV
- * DC current : 0.000 ~ 22.000mA
- * Frequency : 1.00 Hz ~ 11.0KHz
- * Pulse : 1 ~ 100000 cycles
- * Loop : 24V

* Pressure function

MEASURING FUNCTION

- * DC voltage : -20mV ~ 55000mV
- * DC current : -4.00 ~ 55.000mA
- * Frequency : 3Hz ~ 50.000KHz
- * Continuity : 250Ω Sound : open/close

* SAFETY : Complies with IEC1010

ADDITIONAL FUNCTIONS :

- * High accuracy of 0.02% for measure & source
- * Max. allowable voltage : 30V
- * Power supply : 1.5V x 4 Alkaline batteries.
- * Accessories : User manual, Test lead
Carrying case
- * Optional Accessories : AC adaptor (VCPS)

**MULTIFUNCTION PROCESS CALIBRATOR
GT24/25**

Accuracy : ± 0.02%
Two independent channels for input and output allowing in time input and output operation



| Range | Performance Parameter | Model | 24 | 25 |
|-----------------------|--|--|--|-------------|
| Source | DC Millivolt | Range | -10~110mV | -10~110mV |
| | | Accuracy = ± (% of the set value + % of Range) | 0.02%+0.01% | 0.02%+0.01% |
| | | Resolution | 1µV | 1µV |
| | DC voltage | Range | -0.1~11v | -0.1~11v |
| | | Accuracy = ± (% of the set value + % of Range) | 0.02%+0.01% | 0.02%+0.01% |
| | | Resolution | 10µV/0.1mV | 10µV/0.1mV |
| | DC current | Range | 0~22mA | 0~22mA |
| | | Accuracy = ± (% of the set value + % of Range) | 0.02%+0.02% | 0.02%+0.02% |
| | | Resolution | 1µA | 1µA |
| | Sink current | Range | 0~22mA | 0~22mA |
| | | Accuracy = ± (% of the set value+% of range) | 0.02%+0.02% | 0.02%+0.02% |
| | | Resolution | 1µA | 1µA |
| External Power Supply | | 5~28V | 5~28V | |
| Resistance | Range | 0~40KΩ | 0~40KΩ | |
| | Accuracy = ± (% of the set value + % of Range) | 0.02%+0.02% | 0.02%+0.02% | |
| Thermocouple | Range | R/S/K/E/J/T/B/N | R/S/K/E/J/T/B/N | |
| | Accuracy | 0.4°C | 0.4°C | |
| RTD | Resolution | 0.1°C/1°C | 0.1°C/1°C | |
| | Range | Pt100/Pt200/Pt500/ Pt1000/Cu 10/Cu 50 | Pt100/Pt200/Pt500/ Pt1000/Cu 10/Cu 50 | |
| | Accuracy | 0.2°C | 0.2°C | |
| Frequency | Resolution | 0.1°C | 0.1°C | |
| | Range | 1Hz~110KHz | 1Hz~110KHz | |
| | Accuracy | ±2words | ±2words | |
| Pulse | Resolution | 0.01Hz/1Hz/0.1KHz/2KHz | 0.01Hz/1Hz/0.1KHz/2KHz | |
| | Range | N/A | 1Hz~10KHz | |
| | Accuracy | N/A | 1~100000cyc | |
| Switch | Resolution | N/A | ±2words | |
| | Range | N/A | 1Hz~110KHz | |
| | Accuracy | N/A | ±2words | |
| Pressure | Resolution | N/A | 0.01Hz/1Hz/0.1KHz/2KHz | |
| | Range | N/A | Depends on the pressure module | |
| | Accuracy ± (% of the set value+% of range) | N/A | Depends on the pressure module | |
| | Resolution | | 5 digit display | |

Detail Specification continued next page

**MULTIFUNCTION PROCESS CALIBRATOR
GT24/25**

Specification GT24/25 (Page 2)

| | | | | |
|---|---------------------|---|---|--|
| MEASUREMENT | DC Millivolt | Range | -5~550mV | -5~550mV |
| | | Accuracy = ± (% of Reading + % of range) | 0.02%+0.01% | 0.02%+0.01% |
| | | Resolution | 1μV/10μV | 1μV/10μV |
| | DC voltage | Range | -0.5~55v | -0.5~55v |
| | | Accuracy = ± (% of Reading + % of range) | 0.02%+0.01% | 0.02%+0.01% |
| | | Resolution | 0.1mV/1mV | 0.1mV/1mV |
| | DC current | Range | -5~55mA | -5~55mA |
| | | Accuracy = ± (% of Reading + % of range) | 0.02%+0.01% | 0.02%+0.01% |
| | | Resolution | 1μA | 1μA |
| | Resistance | Range | 0~5.5KΩ | 0~5.5KΩ |
| | | Accuracy = ± (% of Reading + % of range) | 0.05%+0.02% | 0.05%+0.02% |
| | | Resolution | 0.01Ω/0.1Ω | 0.01Ω/0.1Ω |
| | Thermocouple | Range | R/S/K/E/J/T/B/N | R/S/K/E/J/T/B/N |
| | | Accuracy | 0.7°C | 0.7°C |
| | | Resolution | 0.1°C/1°C | 0.1°C/1°C |
| | RTD | Range | Pt100/Pt200/Pt500/ Pt1000/Cu 10/Cu 50 | Pt100/Pt200/Pt500/ Pt1000/Cu 10/Cu 50 |
| | | Accuracy | 0.3°C | 0.3°C |
| | | Resolution | 0.1°C | 0.1°C |
| | Frequency | Range | 3Hz~50KHz | 3Hz~50KHz |
| | | Accuracy | ±2words | ±2words |
| | | Resolution | 0.01Hz/0.1Hz/1Hz | 0.01Hz/0.1Hz/1Hz |
| | Switch | Range | N/A | CLOSE/OPEN |
| | | Threshold | | 200~300Ω |
| | Pressure | Range | N/A | depends on pressure module |
| Accuracy = ± (% of Reading + % of range) | | depends on pressure module | | |
| Resolution | | 5 digit display | | |
| Continuity Beeper | Range | 0~500Ω | 0~500Ω | |
| | Accuracy | ≤50Ωsound | ≤50Ωsound | |
| | Resolution | 0.01Ω | 0.01Ω | |
| Loop Power Supply | Range | 24V | 24V | |
| | Accuracy | ±10% | ±10% | |
| | The maximum current | 22mA | 22mA | |
| Backlight | | ✓ | ✓ | |
| Auto Power off | | ✓ | ✓ | |
| Charging function | | ✓ | ✓ | |
| Room temperature display | | ✓ | ✓ | |
| Battery detetion | | ✓ | ✓ | |
| The ramp signal | | ✓ | ✓ | |
| Communication function | | Rs232 Serial communication, can realize remote control instrument by the device driver software | Rs232 Serial communication, can realize remote control instrument by the device driver software | |
| Safety | | EN61010-1 : 2001 | EN61010-1 : 2001 | |
| Withstand voltage | | The input and output AC 350V/1 Min. | The input and output AC 350V/1 Min. | |
| Insulation | | The input and output DC500V/50MΩ | The input and output DC500V/50MΩ | |
| EMC | | EN61326-1:2006 | EN61326-1:2006 | |
| Authentication | | CE | CE | |
| Display | | Double display on the LCD screen | Double display on the LCD screen | |
| Power supply | | 4x1.5 AAAAkaline battery | 4x1.5 AAAAkaline battery | |
| Size | | 205 x 95 x 42 mm | 205 x 95 x 42 mm | |
| Weight | | about 500g | about 500g | |

**MULTIFUNCTION PROCESS CALIBRATOR
G-TECH GT26/26H**

Protection grade : IP65
 Accuracy : ± 0.01%
 HART communication (only G-TECH 26H)
 Two independent channels for input and output, allowing in-time input and output operation



| Project | Performance Parameter | Model | 26 | 26H |
|-----------------|--|--|--|--|
| Source | DC Millivolt | Range | -10~110mV | -10~110mV |
| | | Accuracy = ± (% of the set value+% of range) | 0.01%+0.01% | 0.01%+0.01% |
| | | Resolution | 1μV | 1μV |
| | DC voltage | Range | -0.1~11v | -0.1~11v |
| | | Accuracy = ± (% of the set value+% of range) | 0.01%+0.01% | 0.01%+0.01% |
| | | Resolution | 10μV/0.1mV | 10μV/0.1mV |
| | DC current | Range | 0~33mA | 0~33mA |
| | | Accuracy = ± (% of the set value+% of range) | 0.01%+0.01% | 0.01%+0.01% |
| | | Resolution | 1μA | 1μA |
| | Sink current | Range | 0~33mA | 0~33mA |
| | | Accuracy = ± (% of the set value+% of range) | 0.01%+0.01% | 0.01%+0.01% |
| | | Resolution | 1μA | 1μA |
| | | External Power Supply | 5~28V | 5~28V |
| | Resistance | Range | 0~4KΩ | 0~4KΩ |
| | | Accuracy = ± (% of the set value+% of) | 0.01%+0.01% | 0.01%+0.01% |
| | | Resolution | 0.01Ω/0.1Ω/ | 0.01Ω/0.1Ω/ |
| | Thermocouple | Range | R/S/K/E/J/T/B/N/L/U | R/S/K/E/J/T/B/N/L/U |
| | | Accuracy | 0.4°C | 0.4°C |
| | | Resolution | 0.1°C/1°C | 0.1°C/1°C |
| | RTD | Range | Pt100/Pt200/Pt500/ Pt1000/Cu 10/Cu 50 | Pt100/Pt200/Pt500/ Pt1000/Cu 10/Cu 50 |
| Accuracy | | 0.2°C | 0.2°C | |
| Resolution | | 0.1°C | 0.1°C | |
| Frequency (HZ) | Range | 1Hz~50KHz | 1Hz~50KHz | |
| | Accuracy | ±2words | ±2words | |
| | Resolution | 0.01Hz/1Hz/0.1KHz/2KHz | 0.01Hz/1Hz/0.1KHz/2KHz | |
| Frequency (CMP) | Range | 60~1200 CPM | 60~1200 CPM | |
| | Accuracy | ±2words | ±2words | |
| | Resolution | 1CPM | 1CPM | |
| Pulse | Frequency | 1Hz~10KHz | 1Hz~10KHz | |
| | Range | 1~100000Cyc | 1~100000Cyc | |
| | Accuracy | ±2words | ±2words | |
| Switch | Resolution | 1Cyc | 1Cyc | |
| | Range | 1Hz~50KHz | 1Hz~50KHz | |
| | Accuracy | ±2words | ±2words | |
| Pressure | Resolution | 0.01Hz/1Hz/0.1KHz/2KHz | 0.01Hz/1Hz/0.1KHz/2KHz | |
| | Range | Depends on the pressure module | Depends on the pressure module | |
| | Accuracy ± (% of the set value+% of range) | Depends on the pressure module | Depends on the pressure module | |
| | Resolution | 5 digit display | 5 digit display | |

Detail specification continued next page.....

MULTIFUNCTION PROCESS CALIBRATOR G-TECH GT26/26H

Detail specification continued

Specification GT26/26H (Page 2)

| | | | | |
|--------------------|---|---|---|--|
| MEASUREMENT | DC Millivolt | Range | -5~550mV | -5~550mV |
| | | Accuracy = ± (% of Reading +% of range) | 0.01%+0.01% | 0.01%+0.01% |
| | | Resolution | 1μV/10μV | 1μV/10μV |
| | DC voltage | Range | -0.5~35v | -0.5~35v |
| | | Accuracy = ± (% of Reading +% of range) | 0.01%+0.01% | 0.01%+0.01% |
| | | Resolution | 0.1mV/1mV | 0.1mV/1mV |
| | DC current | Range | -5~55mA | -5~55mA |
| | | Accuracy = ± (% of Reading +% of range) | 0.01%+0.01% | 0.01%+0.01% |
| | | Resolution | 1μA | 1μA |
| | Resistance | Range | 0~5.5KΩ | 0~5.5KΩ |
| | | Accuracy = ± (% of Reading +% of range) | 0.01%+0.01% | 0.01%+0.01% |
| | | Resolution | 0.01Ω/0.1Ω | 0.01Ω/0.1Ω |
| | Thermocouple | Range | R/S/K/E/J/T/B/N/L/U | R/S/K/E/J/T/B/N/L/U |
| | | Accuracy | 0.5°C | 0.5°C |
| | | Resolution | 0.1°C/1°C | 0.1°C/1°C |
| | RTD | Range | Pt100/Pt200/Pt500/ Pt1000/Cu 10/Cu 50 | Pt100/Pt200/Pt500/ Pt1000/Cu 10/Cu 50 |
| | | Accuracy | 0.3°C | 0.3°C |
| | | Resolution | 0.1°C | 0.1°C |
| | Frequency Hz | Range | 3Hz~50KHz | 3Hz~50KHz |
| | | Accuracy | ±2words | ±2words |
| | | Resolution | 0.01Hz | 0.01Hz |
| | Frequency CMP | Range | 180~3000000CPM | 180~3000000CPM |
| | | Accuracy | ±2words | ±2words |
| | | Resolution | 1CPM | 1CPM |
| | Switch | Range | CLOSE/OPEN | CLOSE/OPEN |
| | | Threshold | 200~300Ω | 200~300Ω |
| Pressure | Range | depends on pressure module | depends on pressure module | |
| | Accuracy = ± (% of the set value+% of range) | depends on pressure module | depends on pressure module | |
| | Resolution | 5 digit display | 5 digit display | |
| Pulse | Range | 1-100000Cyc | 1-100000Cyc | |
| | Accuracy | ±2words | ±2words | |
| | Resolution | 1 Cyc | 1 Cyc | |
| Loop Power Supply | Range | 24V | 24V | |
| | Accuracy | ±10% | ±10% | |
| | The maximum current | 22mA | 22mA | |
| HART | | N/A | ✓ | |
| | Backlight | ✓ | ✓ | |
| | Auto Power off | ✓ | ✓ | |
| | Charging function | ✓ | ✓ | |
| | Room temperature display | ✓ | ✓ | |
| | Battery detetion | ✓ | ✓ | |
| | The ramp signal | ✓ | ✓ | |
| | Communication function | Rs232 Serial communication, can realize remote control instrument by the device driver software | Rs232 Serial communication, can realize remote control instrument by the device driver software | |
| | Safety | EN61010-1 : 2001 | EN61010-1 : 2001 | |
| | Withstand voltage | The input and output AC 350V/1 Min. | The input and output AC 350V/1 Min. | |
| | Insulation | The input and output DC500V/50MΩ | The input and output DC500V/50MΩ | |
| | EMC | EN61326-1:2006 | EN61326-1:2006 | |
| | Authentication | CE | CE | |
| | Display | 3.2" TFT screen | 3.2" TFT screen | |
| | Power supply | 4x1.5 AAA Alkaline battery | 4x1.5 AAA Alkaline battery | |
| | Size | 206 x 97 x 60 mm | 206 x 97 x 60 mm | |
| | Weight | about 633g | about 633g | |

**CURRENT LOOP CALIBRATOR WITH HART COMMUNICATION
G-TECH 709H**



HART COMMUNICATIONS

The 709H adds HART communication and supports a select set of the HART universal and common practice commands. This makes the 709H unique as both an affordable, compact loop calibrator and powerful HART communication troubleshooting tool.

In the communication mode the user will be able to read basic device information, perform diagnostic tests, and trim the mA output on most HART enabled transmitters. In the past this could only be done with a dedicated communicator, a high-end multifunction calibrator, or a laptop computer with HART modem. 709H will allow virtually any technician to service and support HART devices.

Supports HART general instructions and general application instructions. Able to read the device basic information, perform diagnostic testing and calibration to fine tune most HART transmitter, can store up to 20 HART device configuration file.

Performance index

Output Performance Index (applicable to temperature range from 18°C to 28°C, within one year after calibration)

| Output | Range | Output Range | Resolution | Accuracy | Remarks |
|--|-------|-------------------|------------|-------------------------------------|--|
| DCA | 20mA | 0.000 ~ 22.000mA | 0.001mA | ± 0.01% set Value ±0.015% Range | Max. load 1Kohm at 20mA |
| Simu-transmitter (Absorption Current) | -20mA | 0.000 ~ -22.000mA | 0.001mA | ± 0.01% Set Value ± 0.015% Range | Max. load 1K ohm at 20mA Note : power supply range : 5 ~ 25VDC |
| Loop Power Supply | 24V | | | ±10% | Max. output current up to 25mA |

input Performance Index (applicable to temperature range from 18°C to 28°C, within one year after calibration)

| Input | Range | Output Range | Resolution | Accuracy | Remarks |
|--------------|-------|-------------------|------------|----------------------------------|-------------------------------|
| Voltage | 28V | -2.000 ~ 28.000V | 1mV | ± 0.01% Reading ±0.01% Range | Input resistance about 1mΩ |
| Current | 30mA | -4.000 ~ 33.000mA | 0.001mA | ± 0.01% Reading ± 0.01% Range | Input resistance about 20Ω |
| Loop Current | 20mA | 0.000 ~ 22.000mA | 0.001mA | ±0.01% Reading ± 0.01% Range | providing 24V loop Power |

GENERAL SPECIFICATIONS

- Power supply : Four 1.5V alkaline batteries (LR6)
- Battery life : About 360 mA/5V under the condition of 20mA with 1Kohm load
- Max. permitted voltage : 30V (between any two terminals or between any terminal and earth ground)
- Operating temperature : 0°C ~ 50°C
- Operating relative humidity : ≤ 80% RH
- Storage temperature : ≤-20°C ~ 60°C
- Relative humidity for storage : ≤90%RH
- Temperature co-efficiency : 0.1xBasic accuracy / °C (Temperature <18°C or > 28°C)
- protection level : IP65(Dust, Water spray)
- Display : 3.2 inch TFT color display
- Size : 206(L) x 97(W) x 60(D) mm
- Weight : 600g
- Safety : EN61010-1:2001
- Optional : PC infrared communications accessories package, Linear power adapter (DC5V), Hook type tester

Accessories :

Test pen, Industrial test lead, Corcodile clip, Quick guide, Product qualification certificate, product user manual, insurance tube, 5 x alkaline battery

**DIGITAL PROCESS METER (DMM + CALIBRATOR)
G-TECH PM 79**

Features

- Process meter is a handheld, battery-operated tool for measuring electrical parameters. It has all the features of digital multimeter (besides the features of RTD and ID) It could also output signals of direct voltage, current, resistance temperature and frequency as well.
- Auto / Manual range switch, Measure value display hold
- The thermocouple high accuracy could end can auto offset panel auto calibrated the function of auto close backlight and auto power off
- Large LCD include white LED backlight
- It is easy to operate by user cabinet and solicit adapt to be used at locate
- Safety compelled with IEC 1010 terms

Technical Specification

All the specifications apply to +18°C to +28°C, 10% to 70% RH unless stated otherwise

All specification assume a 5-minute warm-up period. Standard specification is valid for one year.



DC Voltage Measurement

| Range (DCV) | Resolution | Accuracy ± (% of reading + counts) |
|-------------|------------|------------------------------------|
| 4.000V | 0.001V | 0.2% + 4 |
| 40.00V | 0.01V | 0.2% + 4 |
| 400.0V | 0.1V | 0.2% + 4 |

- Measuring impedance : 10MΩ (nominal) <100pf
- Common mode rejection ratio : 50Hz or 60Hz > 100dB
- Normal mode rejection ratio : 50Hz or 60Hz > 45dB
- Over voltage protection : 600Vp

DC mV Measurement

| Range (DCmV) | Resolution | Accuracy ± (% of reading + counts) |
|--------------|------------|------------------------------------|
| 40.00mV | 0.01V | 0.5% + 6 |
| 400.0mV | 0.1V | 0.2% + 4 |

- Measuring impedance : 10MΩ (nominal)
- Over voltage protection : 600Vp

AC Voltage Measurement

| Range (ACV) | Resolution | Accuracy ± (% of reading + counts) 40 ~ 400Hz |
|-------------|------------|--|
| 400.0mV | 0.1mV | 1.0% + 4 |
| 4.000V | 0.001V | 0.5% + 4 |
| 40.00V | 0.01V | 0.5% + 4 |
| 400.0V | 0.1V | 0.5% + 4 |

Specification are valid from 5% to 100% of amplitude range 400mV is only confined to manual range

- AC conversion : Average value
- Measuring impedance : 10MΩ (nominal) <100pf
- Common mode rejection ratio : 50Hz or 60Hz > 100dB
- Over voltage protection : 600Vp

DC Current Measurement

| Range (DC mA) | Resolution | Accuracy ± (% of reading + counts) |
|-------------------------|------------|------------------------------------|
| 40.00mA | 0.01mA | 0.2% + 4 |
| 400.0mA | 0.1mA | 0.2% + 4 |
| Over voltage protection | : | 0.5A, 250V fast blow fuse |
| Measuring impedance | : | 1Ω |

Temperature Measurement

| Range (type) | Set Range | Resolution | Accuracy ± (% of reading + counts) |
|--------------|-----------------|------------|--|
| R | -40°C ~ 1760°C | 1°C | 0.5%+3 (≤100°C) 0.5%+2 (>100°C) |
| S | -20°C ~ 1760°C | 1°C | 0.5%+3 (≤100°C) 0.5%+2 (>100°C) |
| B | 400°C ~ 1800°C | 1°C | 0.5%+3 (≤ 600°C) 0.5%+2 (> 600°C) |
| E | -200°C ~ 500°C | 1°C | 0.5%+2 (≤ -100°C) 0.5%+1 (> -100°C) |
| K | -200°C ~ 950°C | 1°C | 0.5%+2 (≤ -100°C) 0.5%+1 (> -100°C) |
| J | -200°C ~ 700°C | 1°C | 0.5%+2 (≤ -100°C) 0.5%+1 (> -100°C) |
| T | -200°C ~ 400°C | 1°C | 0.5%+2 (≤ -100°C) 0.5%+1 (> -100°C) |
| N | -200°C ~ 1000°C | 1°C | 0.5%+2 (≤ -100°C) 0.5%+1 (> -100°C) |

AC Current Measurement

| Range (AC mA) | Resolution | Accuracy ± (% of reading + counts) |
|-------------------------|------------|------------------------------------|
| 40.00mA | 0.01mA | 0.5% + 4 |
| 400.0mA | 0.1mA | 0.5% + 4 |
| Over voltage protection | : | 0.5A, 250V fast blow fuse |
| Measuring impedance | : | 1Ω |

Resistance Measurement

Specification are valid from 5% to 100% of amplitude range

Detail Specification continued next page...

**DIGITAL PROCESS METER (DMM + CALIBRATOR)
G-TECH PM 79**

Detail Specification continued

Specification continued PM 79 (Page2)

Resistance Measurement

| Range (ACV) | Resolution | Accuracy ± (% of reading + counts) 40 ~ 400Hz |
|-------------|------------|---|
| 400.0Ω | 0.1Ω | 0.2% + 4 |
| 4.000KΩ | 0.001KΩ | 0.2% + 4 |
| 40.00KΩ | 0.01KΩ | 0.2% + 4 |
| 400.0KΩ | 0.1KΩ | 0.2% + 4 |
| 4.000MΩ | 0.001MΩ | 0.5% + 4 |
| 40.00MΩ | 0.01MΩ | 1.0% + 4 |

Open circuit voltage : 0.4V
 Test lead resistance excluded in the accuracy
 Over voltage protection-\ : 600Vp-p

Frequency Measurement

| Range (ACV) | Resolution | Accuracy ± (% of reading + counts) |
|-------------|------------|---------------------------------------|
| 50.00Hz | 0.01Hz | 0.1% + 3 |
| 500.0Hz | 0.1Hz | 0.1% + 3 |
| 5.000KHz | 0.1Hz | 0.1% + 3 |
| 50.00KHz | 0.01KHz | 0.1% + 3 |
| 100.0KHz | 0.1KHz | 0.1% + 3 |

Display updates 3 times/second (at > 10Hz)

Diode Test & Continuity test

Displays voltage drop across device, open circuit voltage 1.1V-1.6V
 Short circuit current : <0.2mA (typical value), Accuracy ± (2% reading + 1 count)

Continuity test indication :

| | |
|---|----------------|
| Continuous audible tone for test resistance | < 50Ω |
| Open circuit voltage | <0.45V |
| Short circuit current | 130μ A typical |
| Over load protection | 600V (peak) |

RTD Measurement

| Range (type) | Input range | Resolution | Accuracy ± (% of reading + counts) |
|--------------|--------------|------------|---------------------------------------|
| Pt 100 | -200°C~700°C | 1°C | 0.5% + 2 |
| Cu 50 | -50°C~150°C | 1°C | 0.5% + 4 |

By using Pt100-385 temperature scale
 Measurement current 1mA
 Note : attached lead resistance excluded

TECHNICAL SPECIFICATIONS

| Function | Range | Set range | Resolution | Precision | Remark |
|----------|------------------|---------------------|--------------------------------|--------------------------------------|--|
| OHM (Ω) | 400Ω | 0 ~ 400Ω | 0.1Ω | 0.5%+4 | 1mA exciting current without accessory lead resistance |
| DC mV | 100.0mV | -10.00mV ~ 10.00mV | 0.01mV | 0.5%+4 | Max. output current 5mA |
| DC V | 5.0000V | -0.5000V ~ 5.5 000V | 0.1mV | 0.2%+4 | Max. output current 5mA |
| FREQ | 100.0Hz | 1.0Hz ~ 110.0 Hz | 0.1Hz | 0.2%+2 | Square wave 50% duty cycle ratio 5V p-p |
| | 1.000KHz | 0.100KHz ~ 1.00KHz | 10.00KHz | 0.2%+2 | |
| | 10.0KHz | 1.0KHz ~ 11.0KHz | 0.1KHz | 0.2%+4 | |
| XMT | 20.000mA | 0 ~ -22.000mA | 0.001mA | 0.2%+4 | External power supply 28V Max. load 1KΩ at 20mA |
| DC mA | 20.000mA | 0 ~ 22.00mA | 0.001mA | 0.2%+4 | internal power supply 15V Max. load 500Ω at 20mA |
| RTD | Pt100 | -200.0°C ~ 850°C | 0.1°C | 0.5%+6 | By using Pt100-385 temperature without accessory lead resistance |
| | Cu50 | -50.0°C ~ 150°C | | | |
| | R | -50.0°C ~ 1760°C | 1°C | 0.5%+3 (≤100) 0.5%+2(> 100) | By using ITS-90 temperature Note : The accuracy does not include the error of internal temperature compensation caused by sensor |
| TC | S | -20.0°C ~ 1760°C | 0.1°C | 0.5%+20 (≤ -100) 0.5%+10 (> -100) | |
| | K | -200.0°C ~ 1370°C | | | |
| | E | -200.0°C ~ 1000°C | | | |
| | J | -200.0°C ~ 200°C | | | |
| | T | -200.0°C ~ 400°C | | | |
| | N | -200.0°C ~ 1300°C | | | |
| B | -40.0°C ~ 1760°C | 1°C | 0.5+3 (≤ 600) 0.5+3 (> 600) | | |

Maximum voltage applied between any output jack and earth ground : 30V DC

Fuse protection for output jacks 63mA, 250V fast blow fuse.

**DIGITAL PROCESS METER with HART LOOP RESISTANCE
G-TECH PM 79A**

INTRODUCTION

This meter is an industrial, battery-powered instrument for field maintenance, an integration of a digital multi-meter and process signal source.

It conforms to safety standards of 600V CAT.IV and 1000V CAT.III defined in IEC 610101-1 Safety Requirement for Electrical Equipment for measurement, Control and Laboratory Use.

It is designed with a dual-color plastic enclosure of Ip65, for application in harsh environment.

It has the following functions:

- **Measurement Functions :**
Measurement of AC Voltage, DC Voltage, Ohm, Capacitance, DC Current, AC Current, On-Off, Diode, Frequency, Thermocouples, Thermal Resistance, Data display and Retention;
Measurement of relative values
- **Output Functions :**
Output of DC voltage, Resistance, Frequency, Thermocouples, Thermal Resistance and DC Current (Constant output, manual stepping and SIMULATE)
- **Loop Inspection:**
Supply power to 24V circuits and meanwhile measurement current with built-in 250Ω HART loop resistance.



Features

- Process meter is a handheld, battery-operated tool for measuring electrical parameters. It has all the features of digital multimeter (besides the features of RTD and ID). It could also output signals of direct voltage, current, resistance, temperature, and frequency as well.
- Auto / Manual range switch, Measure value display hold
- The thermocouple high accuracy could end can auto offset panel auto calibrated the function of auto close backlight and auto power off
- Large LCD include white LED backlight
- It is easy to operate by user cabinet and solicit adapt to be used at locate

Technical Specification

| | |
|-------------------------------|--|
| Overload protection | V-COM terminal AC 1000V/10seconds mAV terminal 500mA/250V quick acting fuse |
| Regulatory compliance | IEC1010-1 (CAT 600V, CAT 1000V, pollution level) |
| Electromagnetic compatibility | Consistent with Group 1 and Class B of IEC 61326-1 |
| Surge Protection | 8kV(As per IEC61001.1-2001) |
| Authentication mark | CE |
| Quality standard | It is developed, designed and produced according to ISO 9001 |

Detailed precision indexes for measurement

| Function | Range | Measuring scope | Resolution | Precision |
|-------------------|-------|------------------|------------|-----------|
| DC Voltage DCV | 50mV | -55.00mV~55.00mV | 0.01mV | 0.1%+4 |
| | 500mV | -550.0mV~550.0mV | 0.1mV | 0.1%+4 |
| | 5V | -5.500V~5.500V | 0.001V | 0.1%+4 |
| | 50V | -55.00V~55.00V | 0.01V | 0.1%+4 |
| | 500V | -550.0V~550.0V | 0.1V | 0.1%+4 |
| | 1000V | -1000V~1000V | 1V | 0.1%+4 |

Detailed Specification continued next page

DIGITAL PROCESS METER with HART LOOP RESISTANCE G-TECH PM 79A

Specification PM 79A (Page 2)

| Function | Range | Measuring scope | Resolution | Precision |
|---------------------------|--------|--------------------|------------|--|
| AC voltage ACV | 5V | 0~5.500V | 0.001V | 0.5%+4(<400Hz) 5%+4(>400Hz) |
| | 50V | 0~55.00V | 0.01V | 0.5%+4 |
| | 500V | 0~550.0V | 0.1V | 0.5%+4 |
| | 1000V | 0V~750V | 1V | 0.5%+4 |
| OHM (Ω) | 500Ω | 0~550.0Ω | 0.1Ω | 0.1%+4 |
| | 5KΩ | 0~5.500KΩ | 0.001KΩ | 0.1%+4 |
| | 50KΩ | 0~55.00KΩ | 0.01KΩ | 0.1%+4 |
| | 500KΩ | 0~550.0KΩ | 0.1KΩ | 0.5%+4 |
| | 5MΩ | 0~5.500 MΩ | 0.001MΩ | 1%+4 |
| | 50MΩ | 0~55.00MΩ | 0.01MΩ | 1%+4 |
| DC current DCI | 50mA | -55.000mA~55.000mA | 0.001mA | 0.1%+5 |
| | 500mA | -500.00mA~500.00mA | 0.01mA | 0.1%+5 |
| AC Current ACI | 50mA | 0000mA~55.000mA | 0.001mA | 0.5%+10 |
| | 500mA | 0.00mA~500.00mA | 0.01mA | 0.5%+10 |
| Frequency FREQ | 10Hz | 0~9.9999Hz | 0.0001Hz | 0.02%+4 |
| | 100Hz | 0~99.999Hz | 0.001Hz | 0.02%+4 |
| | 1000Hz | 0~999.99Hz | 0.01Hz | 0.02%+4 |
| | 10kHz | 0~9.9999kHz | 0.0001kHz | 0.02%+4 |
| | 100kHz | 0~99.999kHz | 0.001kHz | 0.02%+4 |
| | DUTY | 10%~90% | 0.1% | 1% |
| Diode | 2V | | 0.001V | 1%+10 |
| On-off test | 500Ω | | 0.1Ω | ≤50ΩBB |
| Thermocouple TC | R | -40°C~1760°C | 1°C | 0.5%+3°C (≤100)°C 0.5%+2°C (>100)°C |
| | S | -200°C~1760°C | | |
| | B | 400°C~1800°C | | |
| | K | -200°C~1350°C | | |
| | E | -200°C~700°C | | 0.5%+2°C (≤-100)°C 0.5%+1°C (>-100)°C |
| | J | -200°C~950°C | | |
| | T | -200°C~400°C | | |
| | N | -200°C~1300°C | | |
| Thermal resistance RTD | Cu50 | -50°C~150°C | 1°C | 0.5%+3°C |
| | Pt100 | -200°C~850°C | | |
| Capacitance CAP | 10nF | 0~11.00nF | 0.01nF | 5% |
| | 100nF | 0~110.0nF | 0.1nF | 5% |
| | 1000nF | 0~1100.0nF | 1nF | 5% |
| | 10μF | 0~11.00μF | 0.01μF | 5% |
| | 100μF | 0~110.0μF | 0.1μF | 5% |
| | 1000μF | 0~1100.0μF | 1μF | 5% |
| | 10mF | 0~11.00mF | 0.01mF | 5% |
| | 100mF | 0~110.0mF | 0.1mF | 5% |

1. AC measurement True RMS, 20Hz-5kHz, range of 10% ~ 110%
2. The thermocouple measurement adopts the thermometric scale of ITS-90, The precision doesn't include errors in cold-end compensation or influences of therm-electrical potential.
3. The thermal resistance measurement adopts the thermometric scale of PT100-385, The precision doesn't include errors due to lead resistance.
4. During frequency measurement for signals with frequency lower than 3Hz, relevant readings will be zero.

Detailed specification continued next page.....

**DIGITAL PROCESS METER with HART LOOP RESISTANCE
G-TECH PM 79A**

Specification PM 79A (Page 3)

Detailed precision indexes for output

| Function | Range | Output setting scope | Resolution | Precision | Remark |
|-----------------------------------|-----------------|----------------------|------------|--|---|
| DC Voltage DCV | 100mV | -10.00 ~ 110.00mV | 10μV | 0.2%+4 | Maximum output current 0.5mA |
| | 1000mV | -100.00 ~ 1100.00mV | 100μV | 0.2%+4 | Maximum output current 2mA |
| | 10V | -1.000 ~ 11.000V | 1mV | 0.2%+4 | Maximum output current 5mA |
| DC Current DCI | 30mA | 0.000 ~ 33.000mA | 0.001mA | 0.2%+4 | 20mA, Maximum load 1KΩ 30mA, maximum load 600Ω |
| Simulated transmitter SIMULATE | -30mA | 0.000 ~ 33.000mA | 0.001mA | 0.2%+4 | |
| Loop power LOOP | 24V | | | ±10% | Maximum output current 35mA |
| OHM (Ω) | 400Ω | 0.0Ω ~ 400Ω | 0.1Ω | 0.2%+4 | Excitation current ±0.5 ~ 3mA When excitation current is ±1 ~ 0.5mA, an additional error of 0.1Ω should be taken into account The precision doesn't include lead resistance |
| Thermocouple TC | R | 0°C~1767°C | 1°C | 0.2%+3°C (≤100)°C 0.2%+2°C (>-100)°C | With the thermometric scale of ITS-90 The precision doesn't include errors in cold-end compensation |
| | S | 0°C~1767°C | | | |
| | B | 600°C~1820°C | | | |
| | K | -200.0°C~1372°C | 0.1°C | 0.2%+2°C (≤-100)°C 0.2%+1°C (>-100)°C | |
| | E | -200.0°C~1000°C | | | |
| | J | -200.0°C~1200°C | | | |
| | T | -250.0°C~400°C | | | |
| N | -200.0°C~1300°C | | | | |
| Thermal resistance RTD | Pt100 | -200.0°C~850°C | 0.1°C | 0.2%+0.6°C | With the thermometric scale of Pt100-385 with the excitation current of ±1mA The precision doesn't include lead resistance |
| | Cu50 | -050.0°C~150°C | | | |
| Frequency FREQ | 100Hz | 1.0Hz~110.0Hz | 0.1Hz | 0.2%+2 | Rectangular wave, duty cycle of 50% 1 ~ 11Vp-p |
| | 1KHz | 0.100KHz~1.100KHz | 1Hz | 0.2%+2 | |
| | 10KHz | 1.00KHz~11.0KHz | 0.1KHz | 0.2%+2 | |

Load characteristic indicative loads ≥0.01μF.

Input Characteristics

| Function Position | Input impedance (nominal value) | | | | | |
|-------------------|---------------------------------|-------|------|-------------------------------|-------|--------|
| V | 10mΩ <100pF | | | | | |
| mV | >2.5GΩ | | | | | |
| mA | 1Ω | | | | | |
| - | Common - mode rejection ratio | | | Series - mode rejection ratio | | |
| DCV, DCmV | 80dB (dc to 50Hz / 60Hz/1KΩ) | | | 40dB (50Hz / 60Hz) | | |
| ACV, ACmV | 60dB (dc to 50Hz / 60Hz/1KΩ) | | | | | |
| - | Open circuit voltage | | | Full Scale voltage | | |
| Ohm | 2.5V | | | 2.2V | | |
| Diode | < 3.5V | | | 2.2V | | |
| On-Off | < 1V | | | 500mV | | |
| - | | | | | | |
| Ohm | 500Ω | 5KΩ | 50KΩ | 500KΩ | 5MΩ | 50MΩ |
| - | 0.8mA | 0.2mA | 20μA | 2μA | 0.2μA | <0.1μA |
| Diode | 0.2mA (typical value) | | | | | |

Accessories : Standard Accessories : • One pair of testing wires (including alligator clip) • One operating manual
• 4 x 1.5V alkaline cells (Lr6) • One 500mA/250V quick acting fuse • One soft portable bag

**PORTABLE METAL HARDNESS TESTER
G-TECH GT 270 & GT 270P (With printer)**

Standard Configuration:

| | | | |
|-----------------------------------|---|-------------------------|---|
| Main unit | 1 | Small support ring | 1 |
| D type impact device (With cable) | 1 | Software | 1 |
| Standard test block | 1 | Manual | 1 |
| Cleaning brush (l) | 1 | Instrument packing case | 1 |



Features :

- Compact plastic case, suitable for use under poor working condition. Test at any angle, even upside down
- Wide measuring range. It can measure the hardness of all metallic materials. Direct display of hardness scales HRA, HRB, HRC, HV, HB, HS, HL
- Large screen (segment LCD), showing all functions and parameters. with EL background light
- Large capacity memory could store 100 groups information
- Datapro Software to connect with PC via Rs232 port.
- Software calibration function

Technical Specification :

| | |
|---------------------------|--|
| Measuring range | (170-960)HLD, (17-68.5) HRC, (19-651) HB (80-976) HV, (30-100) HS, 59-85 HRA, (13-100) HRB |
| Measuring direction | 360° (↙↘↗↖→←↑) |
| Accuracy | ±6HLD |
| Hardness scale | HL, HB, HRB, HRC, HRA, HV, HS |
| Display | Segment LCD |
| Data memory | Max. 100 groups (relative to impact times 32~1) |
| Working voltage | 3V (2 AA size alkaline battery) |
| Continuous Working period | about 100 hours (with backlight off) |
| Communication interface | RS232 |

**BREATH ALCOHOL TESTER
G-TECH AT 6000**



Main Feature

- Advanced flat surfaced alcohol sensor
- Quick response
- SMD assembling, stable performance
- Smart MCU control
- Direct testing process LCD indication
- Digital LCD display with light blue backup
- Portable & fashion design
- Audio warning beyond pre-set limit
- Sensor fault self checking
- Battery saved design, low voltage indication

Technical Data

- Sensor type : Flat surfaced alcohol sensor
- Detection range : 0.00-0.20BAC% : 0.00 ~ 2.00g/L :
0.00-2.00BAC% : 0.00 - 1.00mg/L : 0.00 - 200mg/100mL
- Alarming level : 0.05BAC% : 0.50g/L : 0.50BAC% : 0.25mg/L : 50mg/100mL
- Accuracy : ±10% F.S
- Working voltage : DC 4.5V (3xAAA batteries) / Working current : <120mA
- Working environment : Temperature -10°C ~ 50°C
- Relative humidity : <95% No Dews
- Display : 3 digits LCD display with light blue backup
- Dimension : 103x65x27mm (LxWxH), Weight : <64g (Battery excluded)
- Battery expectancy time : >200 times

**NON CONTACT ALCOHOL TESTER
G-TECH AT 6001**



Introduction :

G-TECH AT 6001 Non Contact Alcohol Tester is kind of tester designed to measure concentration result of the breathed alcohol in the human body. This device adopts advanced flat surfaced alcohol sensor which has excellent sensitivity and reproducibility, fashionable and portable design make it more convenient for personal use. When the alcohol content exceeds the preset limited level. this device would send an audio and video warning to remind your safety.

Specification :

| | |
|---|---------------------------------|
| Electric current | 150mA |
| Configure battery | Lithium battery (500MAH) |
| Voltage | 5V 1A |
| Service temperature range | -5°C ~ 45°C |
| Storage temperature range | -20°C ~ 50°C |
| Detection mode | Semiconductor gas sensor |
| Measurement range of breath alcohol Concentration | 0~0.20%BAC |
| Measuring object | Alcohol concentration on breath |
| Sensor replacement | Must not |
| Product size | 150 mm x 28.7mm x 30mm |
| Product weight | 83g |



DIGITAL MULTIMETER



DIGITAL CAPACITANCE METER



DIGITAL CLAMP METER



DIGITAL K-TYPE THERMO METER



INFRARED THERMOMETER



DIGITAL ANEMOMETER



NON CONTACT ALCOHOL TESTER



DIGITAL LIGHT METER



HUMIDITY TEMPERATURE METER



SOUND LEVEL METER



Combined Contact/non-Contact Tachometer



THERMAL IMAGER



Digital Insulation Tester with Timer



Digital Earth Resistance Tester



Digital Power Quality Analyzer



Digital Clamp on Earth Tester with Leakage



RCD / LOOP TESTER+USB



COATING THICKNESS METER



DIGITAL PAPER MOISTURE METER



DIGITAL FORCE GAUGE



ULTRASOUND THICKNESS GAUGE



VIBRATION METER



Vehicle Battery Meter



OXYGEN MONITOR



CARBON MONOXIDE MONITOR



CARBON DIOXIDE MONITOR



PORTABLE MULTI-GAS DETECTOR



RTD CALIBRATOR SOURCE & SINK



CURRENT LOOP CALIBRATOR
WITH HART COMMUNICATION



WIRE TRACKER METER

G-TECH®